

12 JANUARY 2023

**NEW FOREST DISTRICT COUNCIL**

**ENVIRONMENT AND SUSTAINABILITY OVERVIEW AND SCRUTINY PANEL**

Minutes of a meeting of the Environment and Sustainability Overview and Scrutiny Panel held on Thursday, 12 January 2023

- \* Cllr Steve Rippon-Swaine (Chairman)
- \* Cllr Sue Bennison (Vice-Chairman)

**Councillors:**

- \* Ann Bellows
- \* Jacqui England  
Allan Glass
- \* Andrew Gossage
- \* Stephanie Osborne

**Councillors:**

- Tony Ring
- \* Derek Tipp
- \* Malcolm Wade  
Diane Andrews  
Steve Davies

\*Present

**In attendance:**

**Councillors:**

Diane Andrews  
Steve Davies

**Also In Attendance:**

**Officers Attending:**

Steve Cook, Tim Guymer, Andrew Herring, Roxanne King, Chris Noble, Manjit Sandhu, James Smith, Joe Tyler, Claire Upton-Brown, Mark Williams and Chris Hodsman and Thomas Dhoop.

**Apologies**

Apologies were received from Cllrs Glass and Ring.

**21 MINUTES**

That the minutes of the meeting held on 8 September 2022 be signed by the Chairman as a correct record.

**22 DECLARATIONS OF INTEREST**

Cllr Wade declared a non-pecuniary interest in agenda item 6 as a member of Hampshire County Council, which was the waste disposal authority for the waste and recycling collected in the New Forest District Council area. He concluded that there were no grounds under common law to prevent him from remaining in the meeting to speak and vote on the matter.

**23 PUBLIC PARTICIPATION**

The following member of the public had registered to speak in accordance with the Council's Public Participation Scheme: -

- Venetia Rowland

The member of the public spoke in respect of the Consultation of Minerals and Waste Plan, at minute 33 below.

**24 TERMS OF REFERENCE FOR THE PANEL**

The Panel noted that it was responsible for the overview and scrutiny of the following Cabinet Portfolio Holders and their areas of responsibility:

1. Environment and Coastal Services (Portfolio Holder - Cllr Steve Davies)
  - a. Waste Strategy
  - b. Refuse & Recycling Collection
  - c. Climate and Sustainability
  - d. Land Drainage
  - e. Coastal Protection
  - f. Car Parking/road Closures
  - g. Beach Huts and Keyhaven
2. Planning, Regeneration and Infrastructure (Portfolio Holder - Cllr Diane Andrews)
  - a. Local Plan
  - b. Development Management
  - c. Building Control
  - d. Listed Buildings and Conservation
  - e. Town Centre Regeneration
  - f. Land Charges

**25 PORTFOLIO HOLDER'S REPORTS AND PERFORMANCE DASHBOARD**

The Portfolio Holder for Planning, Regeneration and Infrastructure addressed the Panel. She gave an update on the following:

- Planning consent for a Strategic Site development of 404 dwellings, a community hub and a convenience store, had been granted by the New Forest District Council (NFDC) Planning Committee at their meeting on 11 January 2023.
- Running parallel to this development, the Infrastructure Delivery Plan provides a comprehensive list of requirements that will mitigate the impact of the Strategic Site development. This includes 22 units of affordable housing in the first phase.
- A new member of staff had been recruited for the Building Control team.
- On phosphates, there had been an embargo upon building in the Avon Valley as of 2018. The Portfolio Holder was pleased to say that the Private Sector had come forward with a solution, utilising their own land to offset nutrients and, in some examples, had created new wetlands or fallow land

sites. Developers could therefore now buy credits from said third parties to allow a way forward with a means to unlock the embargo. This was hoped to enable more housing to be developed in the District.

- £200,000 of funding was provided last year to work on phosphates, nitrates, biodiversity, and net gain in terms of housing development.
- Different projects were ongoing, with changes proposed in the Regeneration and Levelling Up Bill for 2030, which would see a change in permits placing more of the responsibility for nutrient removal on water companies, who are one of the two main sources of nutrient pollution.

A member of the Panel commented on the impacts of schemes the size of the recently approved Strategic Site in Fordingbridge upon local infrastructure. The Panel were reassured by the Portfolio Holder that mitigations had been put in place for this scheme but that members should also engage with the development of the new Local Plan so that local knowledge and experience can be accounted for in the process. Member involvement will also improve understanding and knowledge on planning matters of this scale.

A member of the panel asked a question on the issue of phosphates and nitrates and the impact they have on developments in the District. The Panel were told that currently the developer contribution for nitrate mitigation was around £3000, with the figure for Phosphates being considerably more. Work was being undertaken with partners in the Solent area on this matter and a strategic role had been created to look at the issue of nitrates and phosphates.

The Portfolio Holder for Environment and Coastal Services addressed the Panel. He gave an update on the following:

- The new Materials Recovery Facility (MRF) would not be operational until 2025, This meant there would be a change in service delivery order whereby wheeled bins for garden waste would be introduced in 2024 with the changes for waste and recycling being introduced in 2025.
- Since the last meeting of the Panel, the Portfolio Holder had attended the annual meeting of the Project Integra Steering Board. Information shared at the meeting was useful, with particular emphasis on the quality of materials that should be sent to recycling facilities in order to avoid contamination.
- The Portfolio Holder had visited several waste depots to observe the work undertaken by the teams. He expressed admiration for the staff that worked in depots across the District.
- The Christchurch Bay & Harbour Coastal Protection Strategy remained on target for completion in 2024 and public meetings on this matter had been held in Christchurch and Milford receiving good turnouts to review the round 4 engagement short list options.
- The Portfolio Holder met with Cllr Dowd and a resident of the Hythe Ward in December 2022 to discuss the concerns over flooding,

- The Portfolio Holder had visited Hurst Spit whilst North Point recycling works were being undertaken and was pleased to say that the works had now been completed.
- Electric charging points had been installed at several points across the District with more to follow.
- The annual meeting with officers and the Beach Hut Owners Association had taken place and conversations remained open on the issue of proposed increases to the annual licence fee which would be considered by Full Council.

A member asked about the length of time it takes to fully charge an electric vehicle at a charging point. The Portfolio Holder explained that different vehicles had different charging times and that on average it could be about 4 hours for full charge.

The Panel were informed that beach hut vandalism remained low and that call outs to deal with vandalism in this area were at a lower rate than previous years. Furthermore, the shingles on the seafront promenade at Milford on Sea was last cleared between 12-14 December. There is less demand to clear the promenade in the Winter due to the lower numbers of visitors to the seafront, however recent bad weather meant that this December clean was required.

## **26 WASTE PROGRAMME UPDATE**

The Panel received an update on the Waste Programme. The Waste Programme strategy was approved in July 2022.

Implementation planning for the new system was underway and a revised timetable had now been produced. Due to the complexity of implementing a new waste programme, as well as delays in National Government action, the new timeline would see wheeled bins for garden waste collections be introduced in 2024. The rest of the kerbside collection system would see the introduction of wheeled bins for general waste and mixed recycling, with a separate collection of paper and card in a reusable bag and move to fortnightly collections in 2025. A weekly food waste collection service would also be introduced.

The Panel were reminded of the infrastructure developments that were required to implement the new services, namely the new MRF that would be built in Eastleigh. Planning consent had been granted by Hampshire County Council for this facility and it was expected to be built and operational by mid-2025.

There were two other projects running parallel to the Waste Strategy, these being the relocation to Hardley Depot and the ICT back-office system improvements. The planning application for Hardley Depot was hoped to be considered at the March Planning Committee meeting and the ICT project would be rolled out later this year.

The Panel were informed that charges and fees for the Garden Waste collection service were not fixed nationally by the Government and that the fee would be agreed by Council on an annual basis. Members heard that the charge for using the Garden Waste service would be dependent on the cost of running the service and other impacts, such as inflation. Currently, 25% of households in the District had subscribed for the Garden Waste service and it was hoped that with the change to the service that the subscription level would increase over time.

At present, Hampshire County Council had confirmed that there was sufficient regional capacity to process the amount of food waste that is produced within the county. The Panel were told that, when measured by weight, food waste accounted for 40% of household general waste within the District. Food Waste containers would be rolled out at the same time as the other bins in 2025.

**RESOLVED:**

That the Waste Programme update be noted.

**27 REGIONAL COASTAL MONITORING PROGRAMME**

The Panel received a detailed presentation on the Southeast Regional Coastal Monitoring Programme (SRCMP). The Programme Manager of the Channel Coastal Observatory explained to members both the aims of the SRCMP as well as the coastal monitoring work that was ongoing. The Channel Coastal Observatory, part of the Coastal Team at NFDC, were the lead organisation for the South East's Coastal Monitoring Programme.

The main areas of focus for the team were to provide an evidence base for coastal erosion risk management as well as supporting the Risk Management Authorities on several of their strategies and programmes with a view to ultimately prevent coastal erosion across the country. This project would be fully funded by the Department for Environment Food and Rural Affairs (DEFRA) with a total budget of £12,382,000. The programme was currently in Phase III. The Panel were told that the collection of data sets, including topographical, lidar, aerial photography and bathymetric data formed the core area of the programme. This data is used to inform current and future management of the coastline, with regard to flood and coastal erosion risk. A coastal asset register was being produced, having started last year, which focused on the efforts of collating existing asset data in the Southeast region, of which the data was all freely available on the organisation's website, Coastalmonitoring.org. The history of coastal management saw data records that extended back 20 years in the southeast.

Members heard that the Channel Coastal Observatory maintained a hydrodynamic network of buoys, tide gauges and meteorological stations and that this network of instruments provided a national service for flood and storm forecasting as well as analysis and technical data for future management. As an example, the Lymington Tide Gauge had collected 16 years of data since April 2007 and had provided information on water levels and tide surges at Lymington on a daily basis.

Specific monitoring of Barton Cliffs had been undertaken since 1995 and aerial photography of the site was produced every two years with movement of the cliff itself being monitored and recorded.

Overall, it was explained that at this point during Phase III of the programme, CCO had collected 21 years of wave data, 14 years of tide data, 17.5 years of meteorological data, with 101 beach profile surveys undertaken and full LiDAR and Aerial Photography captures completed since 2021. This put the project in a strong position to proceed from 2023 onwards.

A member asked whether the District was experiencing noticeable loss and erosion of cliffs and beaches to which the Panel heard that some areas were more likely to be affected by coastal erosion than others, such as Barton Cliffs.

## **28 COASTAL WATER SAFETY POLICY**

The Panel received a presentation on the proposed Coastal Water Safety Policy. The Coastal Team were currently reviewing coastal sites within NFDC ownership or management. From this, a Coastal Water Safety Policy was being developed which would include several elements. Including, but not limited to: a risk assessment of all of the coastal sites within the District, a review of the public safety signage, a review of the current public rescue equipment, the implementation of the findings of the risk assessments and a review of the inspection regimes and roles.

The purpose of this new review was to incorporate and acknowledge new guidance and legislation. Previous reviews, undertaken by the Health and Safety Team and supported by the Royal National Lifeboat Institute (RNLI), were focused on the main beach sites within the District, rather than all of the coastal areas.

Given the variety of coastal sites across the District, including beaches, slipways, waterways, swim zones, structures and quays, it was heard that there were an equally varied amount of hazards present. These included: tides and currents, vessel and tidal surges, changing beach levels and storm waves. Throughout this work, a number of information sources had been evaluated and initial engagement had been made with the RNLI for them to be appointed as the competent supplier to undertake site assessments. These assessments would take place during April/May 2023 and A Water Safety Policy consultation and review would be conducted after May 2023. Following these, an implementation plan would be made listing the identified actions required.

Specific steps were being taken to ensure that all Keyhaven river management and operations complied with the Port Marine Safety Code. The Panel heard that NFDC would also put in place a Marine Management Safety Scheme as well as a suitable candidate for a 'Designated Person' in order to reach the required standards.

Following questions from members, it was heard that:

- NFDC lease some coastal sites within the District, in order to create better public access links to the coastal sites that NFDC already own and manage.
- NFDC manage and operate 35 pieces of public safety/rescue equipment.
- The Coastal team were conscious of the need for some services to explore inland water safety at some stage.
- The idea of a water forum had been considered where public information and education on water safety could be shared from a centralised and public-friendly location.

## **29 CLIMATE CHANGE SUPPLEMENTARY PLANNING DOCUMENT**

The Panel received a presentation on the Climate Change Supplementary Planning Document (CCSPD).

The draft CCSPD would be considered by Cabinet in March. The CCSPD supports local plan policy and acknowledges NFDC's climate and nature emergency declaration made in 2021.

The Panel heard that 40% of UK Carbon Dioxide (CO<sub>2</sub>) was emitted by UK households, primarily from the heating systems, resulting in 2 tonnes of CO<sub>2</sub> emissions every year per typical household. Best practice means that energy consumption could be reduced to quarter of current average rates for households and that a home could be operated at zero carbon if fitted with solar panels. It was explained that it costs, on average, £20,000 more to retrofit a home to best practice standards than it would to build to best practice standards in the first place.

The Panel were informed that a CCSPD would help to mitigate and adapt to climate change locally. Mitigation would focus on reducing carbon and greenhouse gasses as part of international efforts to stabilise climate change by limiting temperature rises to 1.5oC. Adapting to climate change would require the improving of resilience of buildings and built-up areas to climatic extremes.

Members heard of the national context regarding climate change action and were reminded of the aims of the Climate Change Act 2008, the Sixth Carbon Budget 2020, the Planning and Compulsory Purchase Act 2004 and the National Planning Policy Framework. All of these pieces of legislation and policy contain commitments and requirements to mitigate climate change.

NFDC had made a commitment in their new build programme, Greener Housing Policy and local plan policies STR1 and ENV3 to achieve sustainable development and design quality buildings that improve resource efficiency and climate change resilience, reducing environmental impacts wherever capable of being effective.

The Panel received an overview of the CCSPD and heard how would clarify how developers should address climate change in planning applications to ensure that developments are optimised before detailed plans are submitted for approval. The mechanism by which this requirement would be met would be through a Climate Change Statement that would be prepared and submitted by developers as part of the planning application process. CCSPD also sets out best practice approaches and standards that developers will be encouraged to target, including taking the practicable steps to decarbonise the running of buildings, to be net zero in operation where possible, to try to reduce embodied carbon in construction and the ensure that development is adapted for future climatic extremes. Members were told that a net zero carbon building would be challenging to achieve, requiring a threefold approach of: renewable energy, energy efficient design and low carbon heating. Sustainable and active travel through cycling, walking or electric vehicles (EVs) would also be encouraged through the SPD.

The Panel were told that the next steps for the CCSPD were as follows:

- On the 1 March 2023 the CCSPD report would be considered by Cabinet with the recommendation to submit the CCSPD for public consultation.
- In May-June 2023 the public consultation will take place.
- In Summer 2023 a review of the consultation will take place and the feedback will be published in order to update the CCSPD.
- Autumn 2023 will see a report on the updated CCSPD go through both Cabinet and then Council with the recommendation for adoption.

A member asked a question on renewable construction and the scale of sustainable developments. It was heard that some volume housebuilders already have zero

carbon products, but that supply chains are still developing and do not yet exist at a scale sufficient to mass produce all homes to net zero carbon standards now. Individuals seemed willing to buy energy efficient homes, and the cost savings to run them should help offset slightly higher construction costs in the short to medium term.

Following a question from a Member, the Panel heard that at the time of public consultation there would be business fora held to promote the profile of the CCSPD.

### **30 CLIMATE AND NATURE EMERGENCY**

The Panel received a presentation on the Climate and Nature Emergency from the Council's new Climate Change Manager.

The Panel heard that the District expected to experience hotter drier Summers, warmer wetter Winters and more frequent and extreme heatwaves, droughts, flooding and coastal erosion.

The Climate Change Manager referenced the National strategies and how the Council would aim to translate this into local action, building on the Climate Change Emergency that the Council declared in 2021. This local action would take shape through the 2022 Action Plan and Strategic Objectives set by the Council. Work on how to progress this ongoing with the Annual Report going to Cabinet in February followed by the detailed 2023 Summer Strategy. These works would take place collaboratively between Hampshire County Council, the New Forest National Park and NFDC.

The Strategy would cross several, wide areas of Council responsibility, such as District residents, businesses, visitors and economy. Each area of focus would be composed of several aspects. Health and wellbeing, accessibility and transport, housing suitability, habitat degradation, storm damage, species loss, food growing, service delivery and waste generation would all form part of the overall strategy.

The New Forest area emits 928,000 tonnes of carbon in 2019. This means the area produces the largest number of emissions for home and industry and second largest for transport and commercial operations within the County. However, the New Forest has a natural sink due to the verdant environment.

The NFDC recorded 3,500 tonnes of carbon emissions in 2020/2021 with approximately 8.8 million kWh of energy bought for £640,000. The biggest sources of emissions are the Council's fleet (46%), gas use and electricity use.

Four areas will align the Climate and Nature Action from 2023 onwards. These will include big emission areas and climate change adaptation. The three programme areas are:

- Carbon Reduction
- Climate Adaptations
- Nature Recovery.

These areas will be underpinned by Programme Management platform to ensure that the Council is communicating where necessary, sharing data, building up partnerships and supporting the work in the most effective way.

**31 GREEN INFRASTRUCTURE UPDATE**

That the Green Infrastructure Update be considered at the Panel's next meeting on 9 March 2023.

**32 NEW FOREST VISITOR STUDY UPDATE****RESOLVED:**

That the New Forest Visitor Study Update be considered at the Panel's next meeting on 9 March 2023.

**33 CONSULTATION OF MINERALS AND WASTE PLAN**

Mrs Venetia Rowland, a local resident, addressed the panel in objection to the Hampshire County Council Mineral and Waste Plan.

She felt that there had been an overestimation of the need for soft sand and gravel by Hampshire County Council for over thirty years and that there had been a reduction in the use of recycled and secondary aggregate production.

Midgham Farm and Cobley Wood Farm were highlighted as two particular extraction sites that would have substantial harmful impact to the area. It was felt that there would be adverse environmental impacts on the local area, extreme sound impacts, cumulative effects from the other active sites and unacceptable implications arising from excess traffic movements.

The member of the public expressed that in their opinion the timeframe for consultation was inadequate due of the lack of accessibility information, the lack of open events, the online documentation amongst other things.

The Panel considered the statement and thanked the member of the public for attending.

The Planning Policy Officer gave the Panel a presentation on the Hampshire Minerals and Waste Plan Consultation. It was heard that there had been a partial update to the plan published in November 2022 for public consultation which concludes on 31st January 2023 which included the commissioning of a consultation at the end of January 2023. This formed part of the is a partial update to the original plan adopted in 2013. The plan was jointly produced by Hampshire County Council, the two City Councils and the two National Parks and the recent review in 2020 concluded that only certain parts of the plan needed updating to reflect changes in national policy. NFDC is one of many consultees.

The plan's purpose and scope were are to enable enough minerals to be extracted for Hampshire's needs and to deal with waste effectively, using it as a renewable energy source were appropriate, covering the period up to 2040. The aims of the plan were are the identification of sites for aggregate extraction and waste processing, mitigating adverse effects from those sites, setting out policies for each mineral type/waste stream and safeguarding mineral and waste infrastructure.

Members were informed reminded that the New Forest contained extensive mineral deposits, primarily being sand and gravel. Existing safeguard plans to protect certain sites are in place. The partial update details additional sites for this purpose.

New policies within the update include:

- Requirements for biodiversity net gain from all developments.
- Climate Change Assessments to be submitted with each planning application.
- A stronger application of the waste hierarchy.
- An update of site allocations to enable a steady and adequate supply of aggregates.

The next steps would be the detailed response to Hampshire County Council, fulfilling the consultation request, by the 31 January 2023 by way of a Portfolio Holder Decision. A further round of consultation would take place in 2023 and the County Council aim to proceed to public examination in the later months of 2024. Following a question from a member, the Panel heard that there had not been detailed information provided on the transport aspects of the update. This was the first time the District Council had seen the sites be proposed, however the further information on the transport and highways impact would be an important part of the Council's response to the Consultation.

Concern was also raised over the environmental impact of the HGV transportation arrangements and the Panel were reassured that the Council would raise concern over all elements of potential impact on the area and the environment.

On contamination, the Panel were informed that asbestos disposal regimes were available and highly controlled from the point of extraction to burial, involving both the Environment Agency and the Waste Authority.

Members were reassured that the Council's consultation response on the Mineral and Waste Plan would be wide reaching and take account of all the varying aspects of potential impact, such as water contamination and carbon emissions.

#### **34 MOTION FROM COUNCIL**

The Panel considered a motion from Council, submitted by Cllr M Wade, concerning the impact that the cost-of-living crisis was having on farmers within the New Forest. The Panel considered that, due to the rising costs of day-to-day goods, such as feed and fertiliser, some farmers were having to consider whether to sell their back up land, much of which has Forest Rights and is important to the sustainability of the ancient New Forest tradition of commoning.

#### **RESOLVED:**

That the Panel recommend to Council to agree the motion by expressing its concern over the financial state of the farming community and, in cooperation with the Executive Head Planning Regeneration and Economy, write to the Secretary of State for Environment, Food and Rural Affairs requesting greater financial support for farmers.

**35 WORK PROGRAMME**

**RESOLVED:**

That the Work Programme be approved.

**36 ANY OTHER ITEMS THAT THE CHAIRMAN DECIDES ARE URGENT**

The Chairman informed the Panel that this was Manjit Sandhu's last Panel meeting, as she would be leaving her current role as Executive Head of Partnerships and Operations, on 31 January 2023. Manjit had been with the Council for 25 years, and on behalf of the Panel, the Chairman wished to place on record members' sincere thanks for her long, dedicated service, help and advice.

CHAIRMAN

This page is intentionally left blank

# Southeast Regional Coastal Monitoring Programme

13

Minute Item 27



**New Forest**  
DISTRICT COUNCIL

Dr Thomas Dhoo  
**Programme Manager**  
**Channel Coastal Observatory**

# Aims

- Provide the evidence base needed for flood and coastal erosion risk management (FCERM)
- Support the Risk Management Authorities (RMA), including the Environment Agency (EA):
  - Plan, design and deliver coastal strategy
  - Coastal capital investment programme
  - Strategic coastal management such as shoreline management planning (SMP)
  - Incident management
- Increased understanding of the effect of climate change, local and national planning, research and education.

# Aims

- In practice, we collect, in a standardised, repeatable and cost-effective way, the following datasets:
    - Wave, tide and meteorological data
    - Topographic data
    - Lidar data
    - Aerial photography
    - Bathymetry
    - Asset register
    - Analysis products:
      - Habitat mapping
- + Make the data freely available

# Programme Design

## A BRIEF HISTORY OF STRATEGIC COASTAL MONITORING

The National Network of Regional Coastal Monitoring Programmes provides strategic monitoring to support FCERM. This is a brief history of the programme.

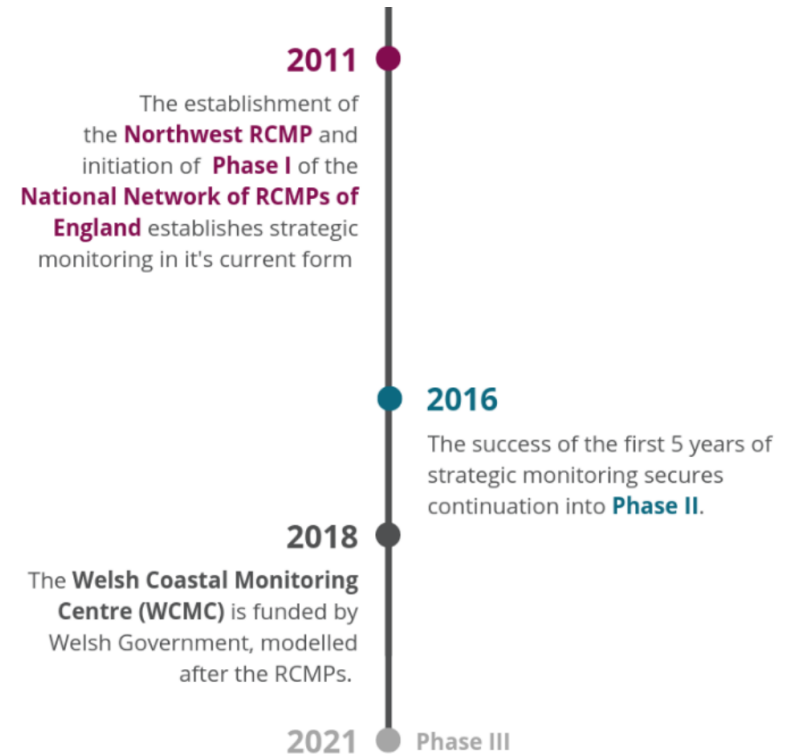
**1950'S**  
**East Riding of Yorkshire** initiates cliff and beach monitoring, using photography and tape measures, in response to the management challenges of a rapidly eroding coastline. A period of local and regional ad-hoc coastal monitoring.

**1987**  
The **Anglian "Sea Defence Management Study"**, is the first regional scale monitoring programme, and the forerunner to the development of **Shoreline Management Plans (SMPs)**.

**2002**  
Andy Bradbury establishes the **Southeast Strategic Regional Coastal Monitoring Programme (RCMP)** to provide a standard, repeatable and cost-effective method of monitoring the coastal environment.

**2006**  
Strategic monitoring is extended to the **Southwest RCMP**

**2008**  
The **Northeast Coastal Observatory (NECO)** expands the regional monitoring ethos northwards



## Phase III (2021- 2027):

Data records extend to 20 years in the Southeast and 10 years nation-wide

# Programme Design



- Lead local authorities:



# Programme Design



- CCO is the lead representative for the National Network of Regional Coastal Monitoring Programmes

## Funding

- Fully funded, Flood defence grant-in-aid (FDGiA) from DEFRA, via the Environment Agency
- Phase III: 2021-2027
- Project budget: £12,382,000



Environment  
Agency

# CCO, Lead Authority for the Southeast

Southeast Regional Coastal Monitoring Programme

SLA's for topographic data collection

19

Canterbury

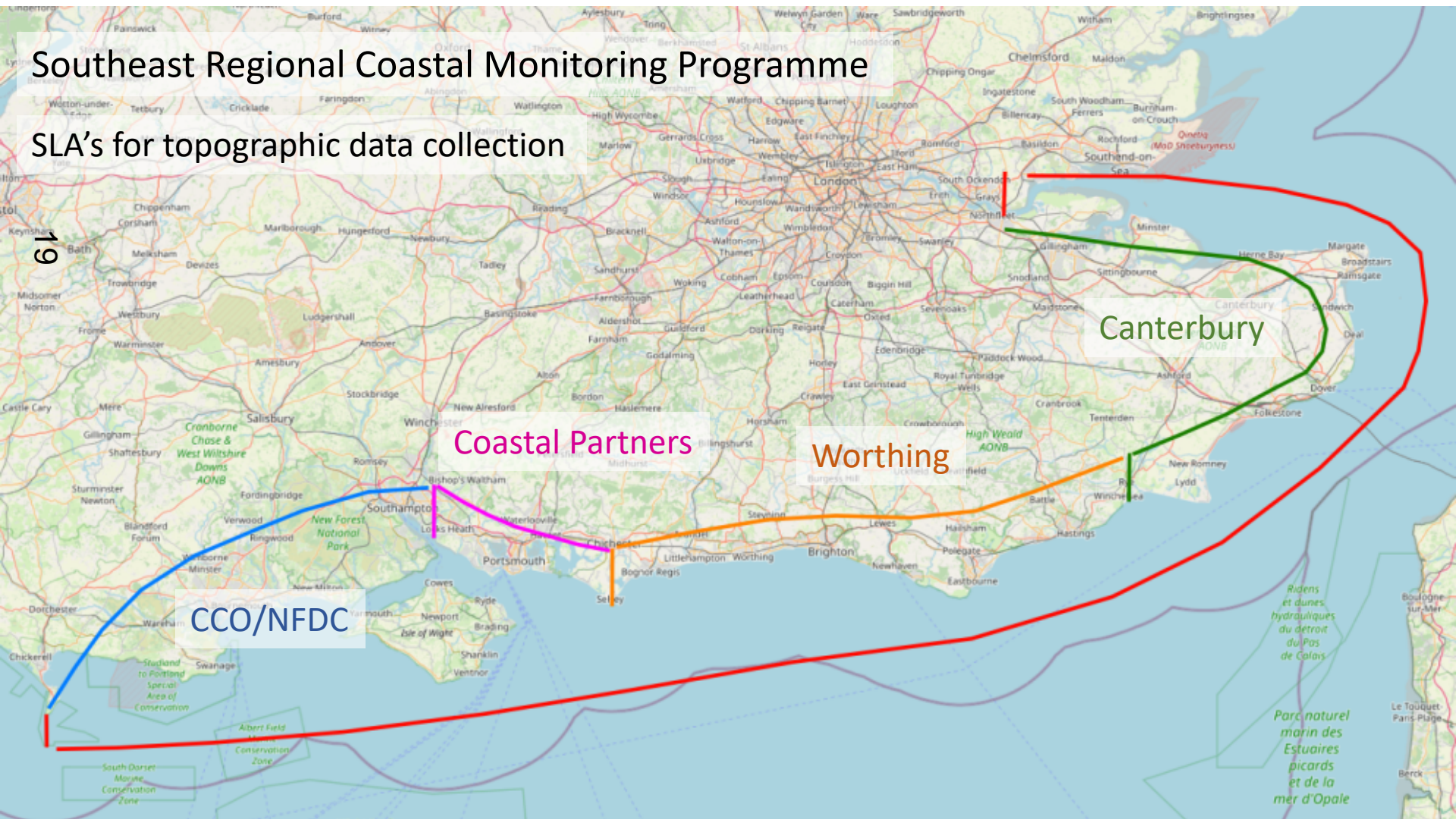
Coastal Partners

Worthing

CCO/NFDC

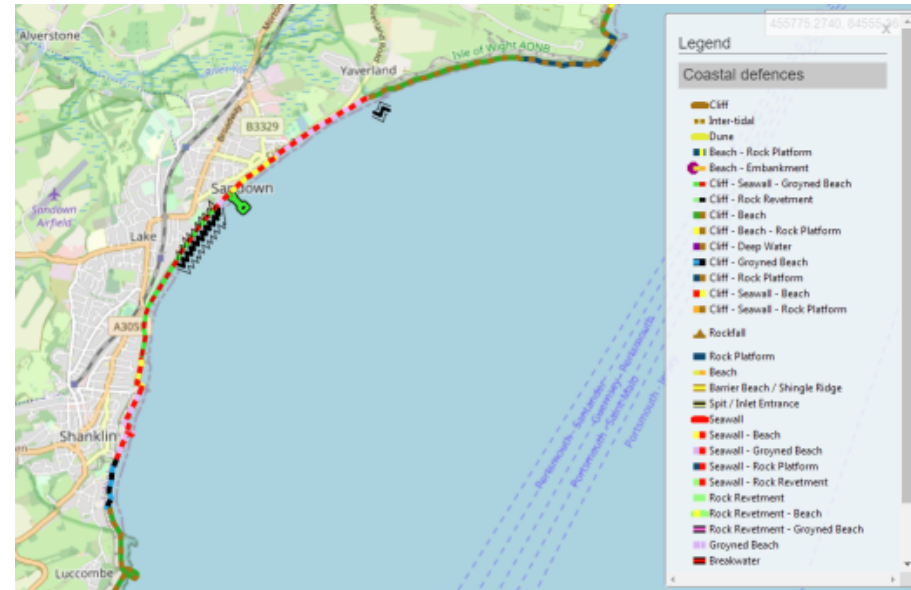
Ridens et dunes  
hydrauliques  
du détroit du Pas  
de Calais

Parc naturel  
marin des  
Estuaires  
picards  
et de la  
mer d'Opale



# Risk-Based Monitoring

- Targeted approach
  - Geomorphology
  - Exposure
  - SMP Management Policy
    - Hold the line
    - Do nothing
    - Advance the line
    - Managed re-alignment
  - Beach Management Plan
- Once-per-phase Survey Schedule Review



# Data Collection

- Wave, tide and meteorological data
- Topographic data
- Lidar data
- Aerial photography
- Bathymetry
- Asset register
- Analysis product:
  - Habitat mapping
- Incident response
- NFDC Surveying



# Hydrodynamic Network

## National Network

- 72 Instruments:
  - 37 wave buoys
  - 14 tide gauges
  - 22 met stations

## CCO provides a national service:

- Quality Control
- Analysis
- Technical advice



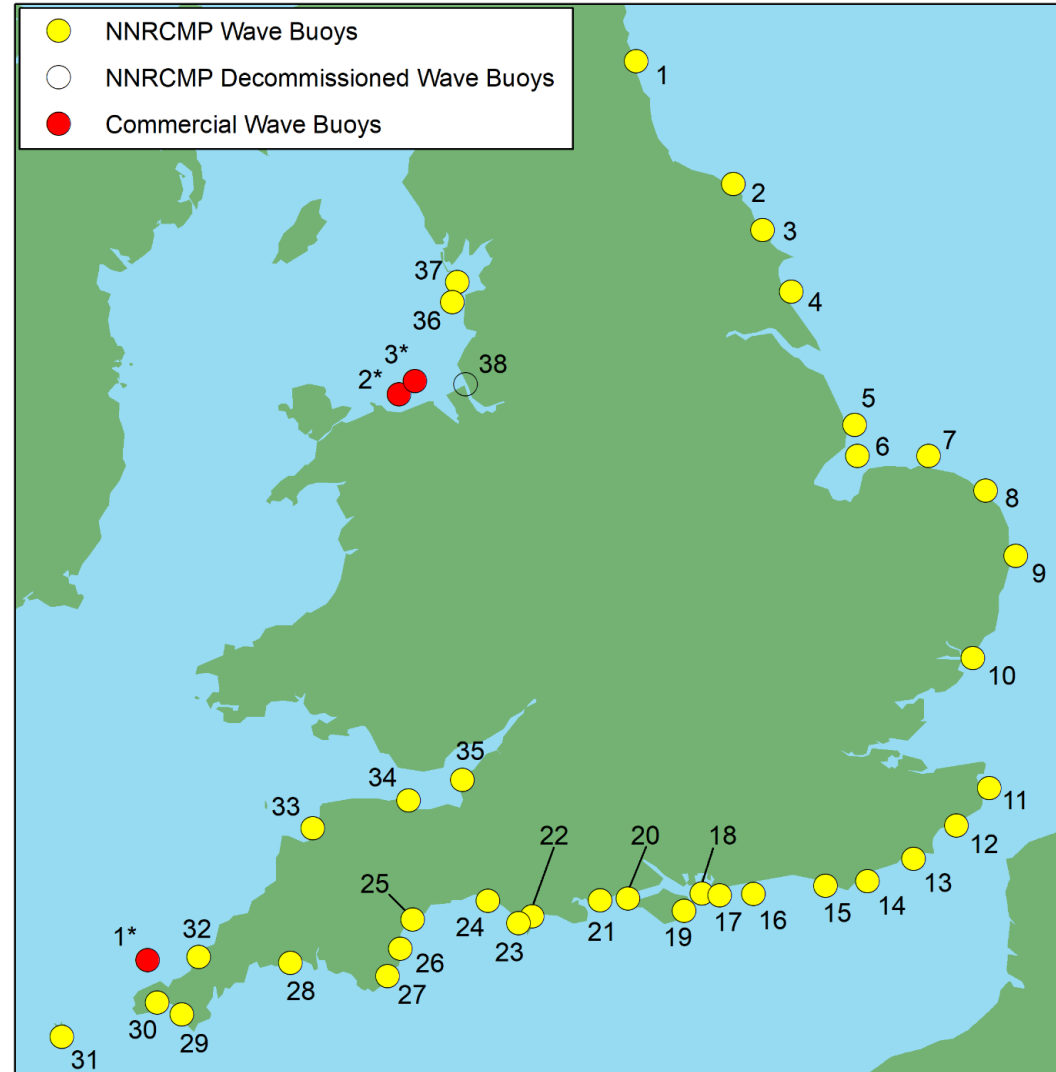
# Wave Buoys

37 Datawell Directional  
Waverider MkIII's

~10-15m CD



23



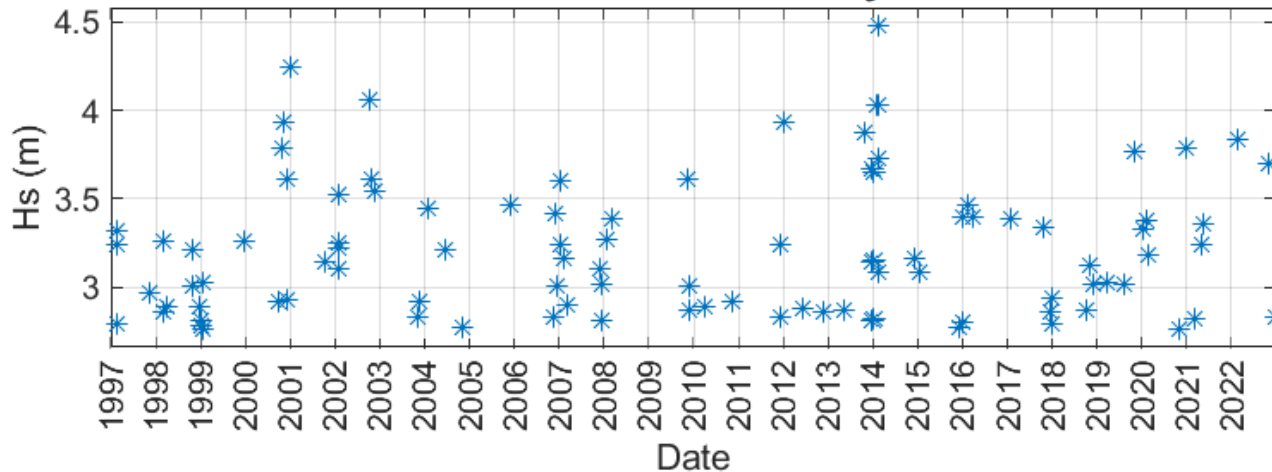
# Milford Wave Buoy

Deployed on 20 May 1996,  
~27 years of data



24

**Storms at Milford - all years**

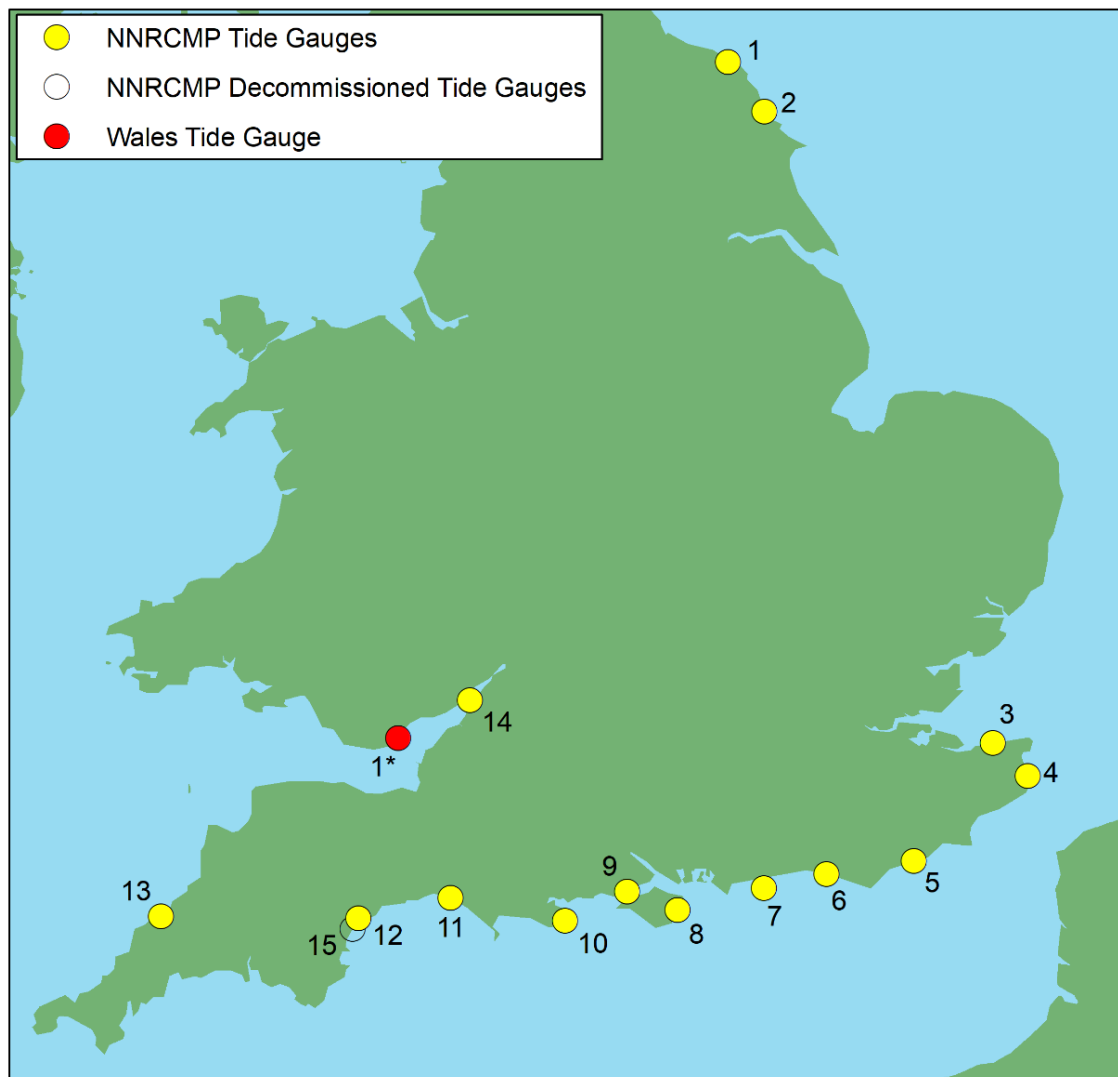


# Tide Gauges

15 tide gauges



©Fugro GB Marine Ltd



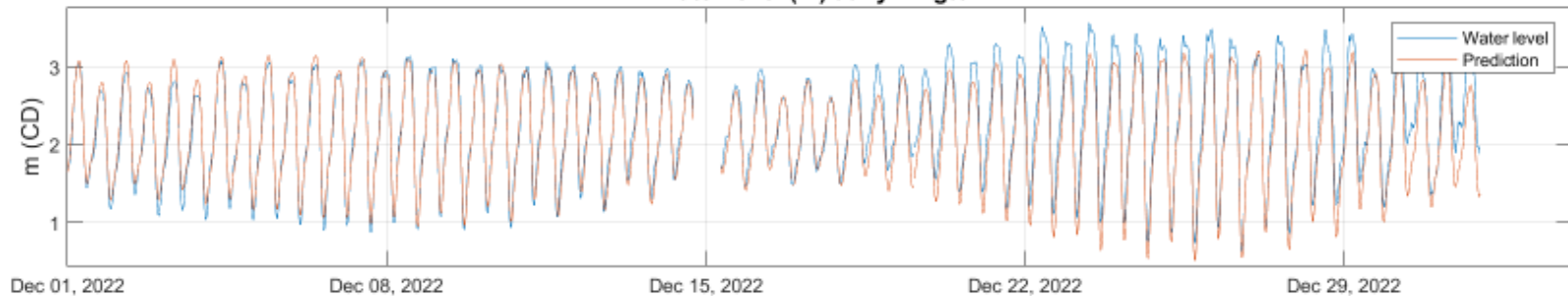
# Lymington Tide Gauge

Deployed on 19 April 2007,  
~16 years of data

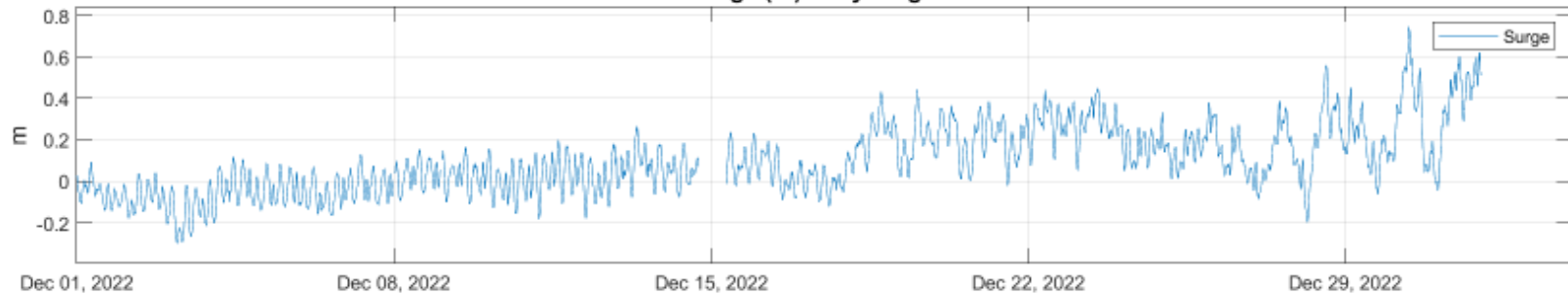


26

Water level (m) at Lymington



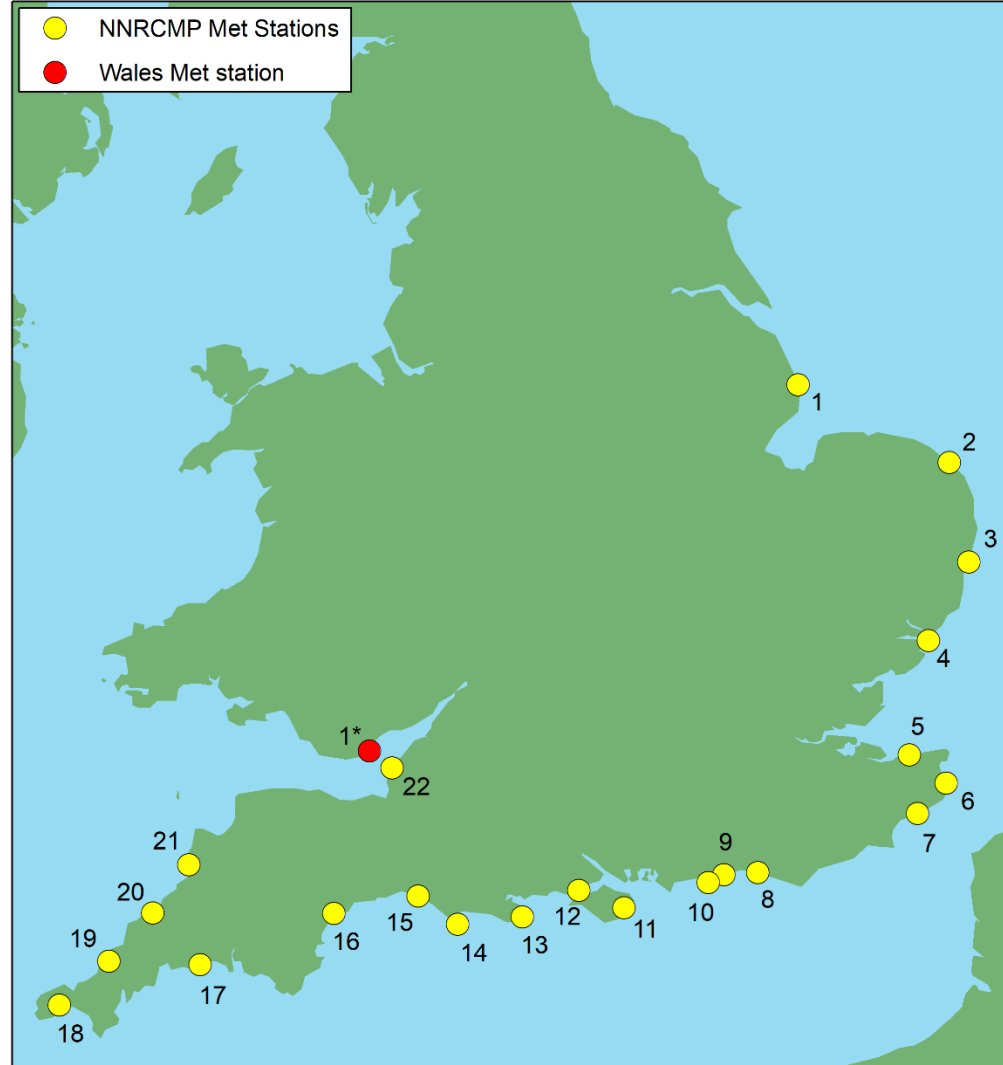
Surge (m) at Lymington



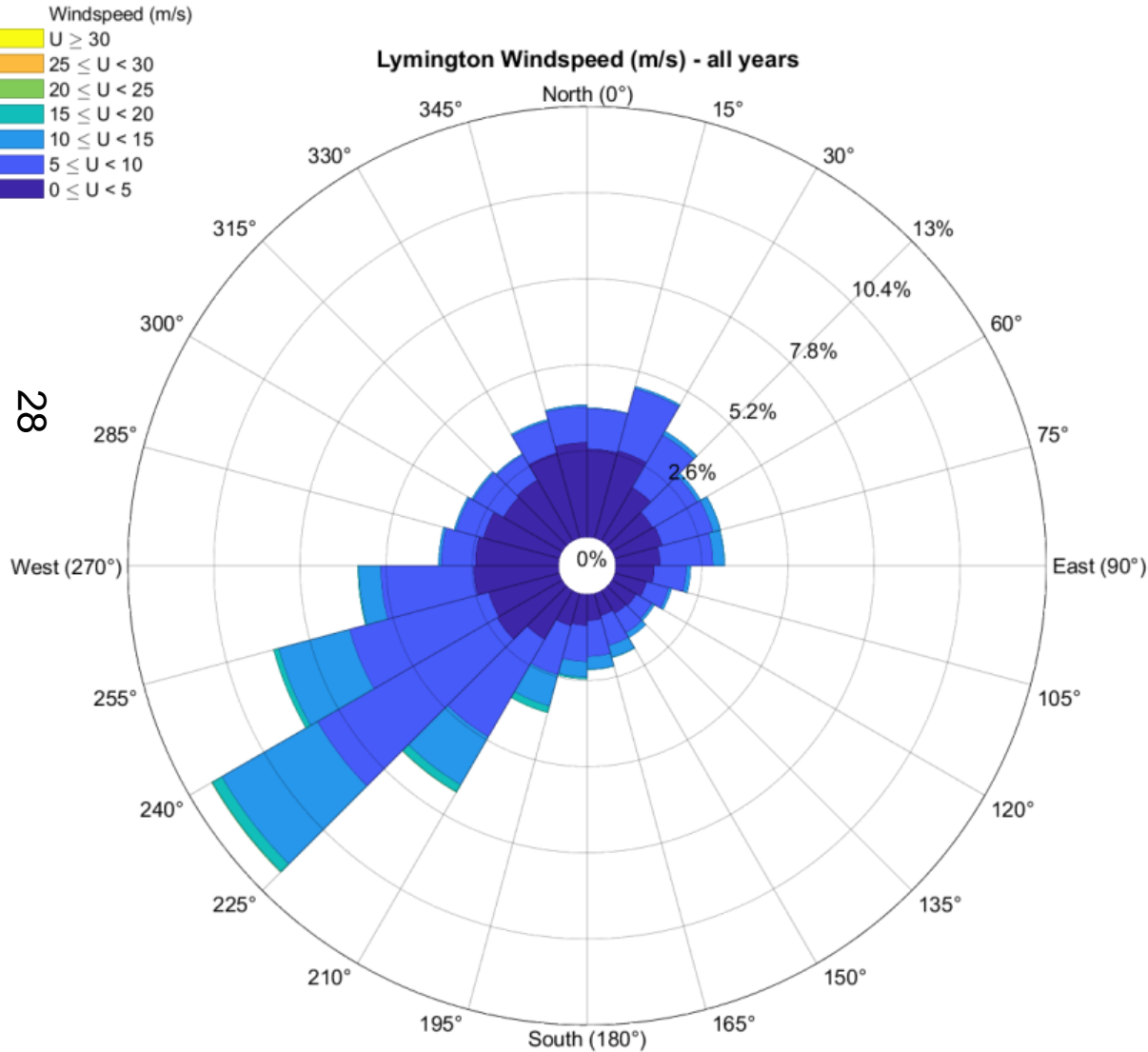
# Meteorological Stations

22 meteorological stations

27



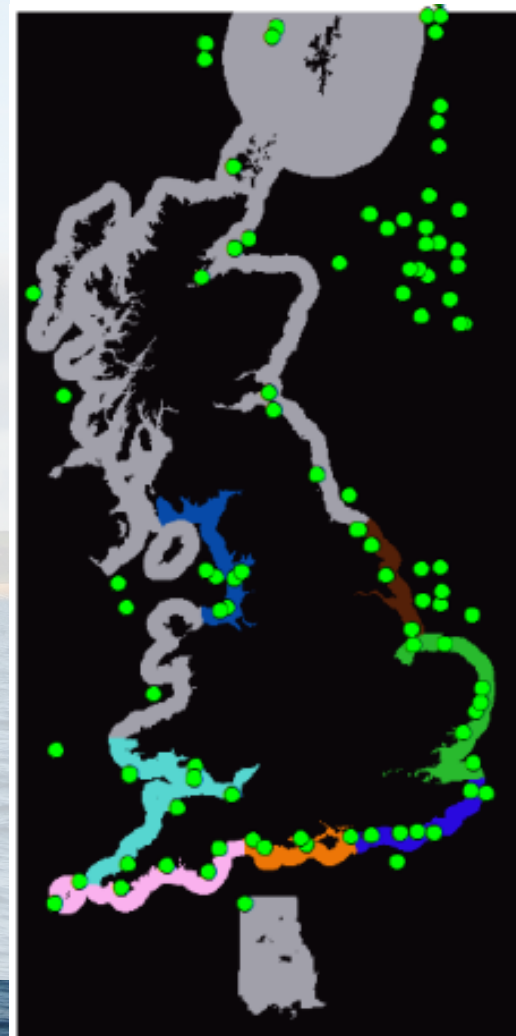
# Lymington Met



# Hydrodynamic Network

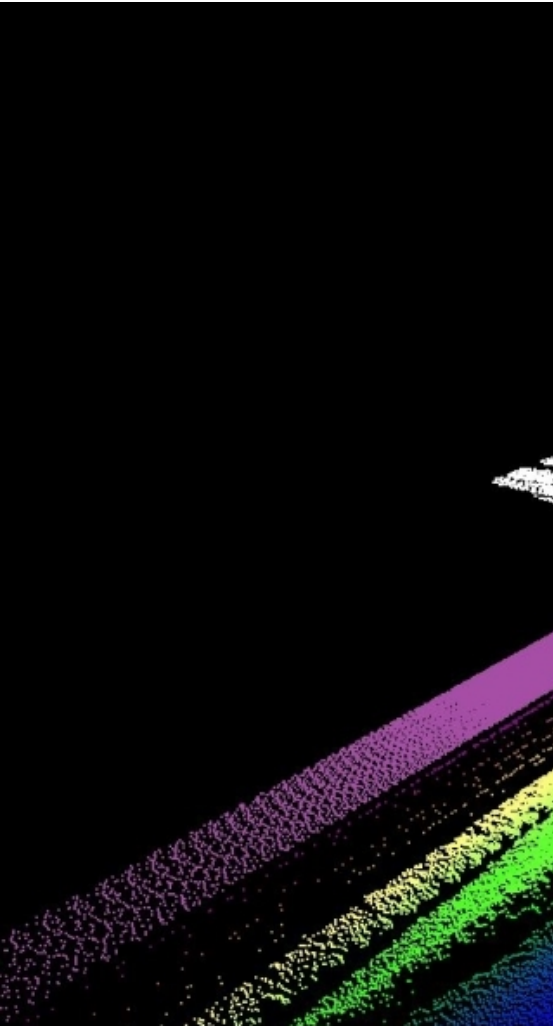
Met Office inshore  
forecast verification

- Real-time data
  - Visualised on website in graphs and tables
  - Direct provision to:
    - CEFAS Wavenet
    - National Flood Forecasting Centre
    - Met Office (verification of WWIII model)
    - IOC Sea Level Monitoring Centre (VLIZ)
    - SWEEP OWWL overtopping model
    - ...
- ➔ Inform post-storm survey work
- QC'd data
- API



# Topographic Data

**Baseline surveys: Milford, 14 April 2021**



# Topographic Data

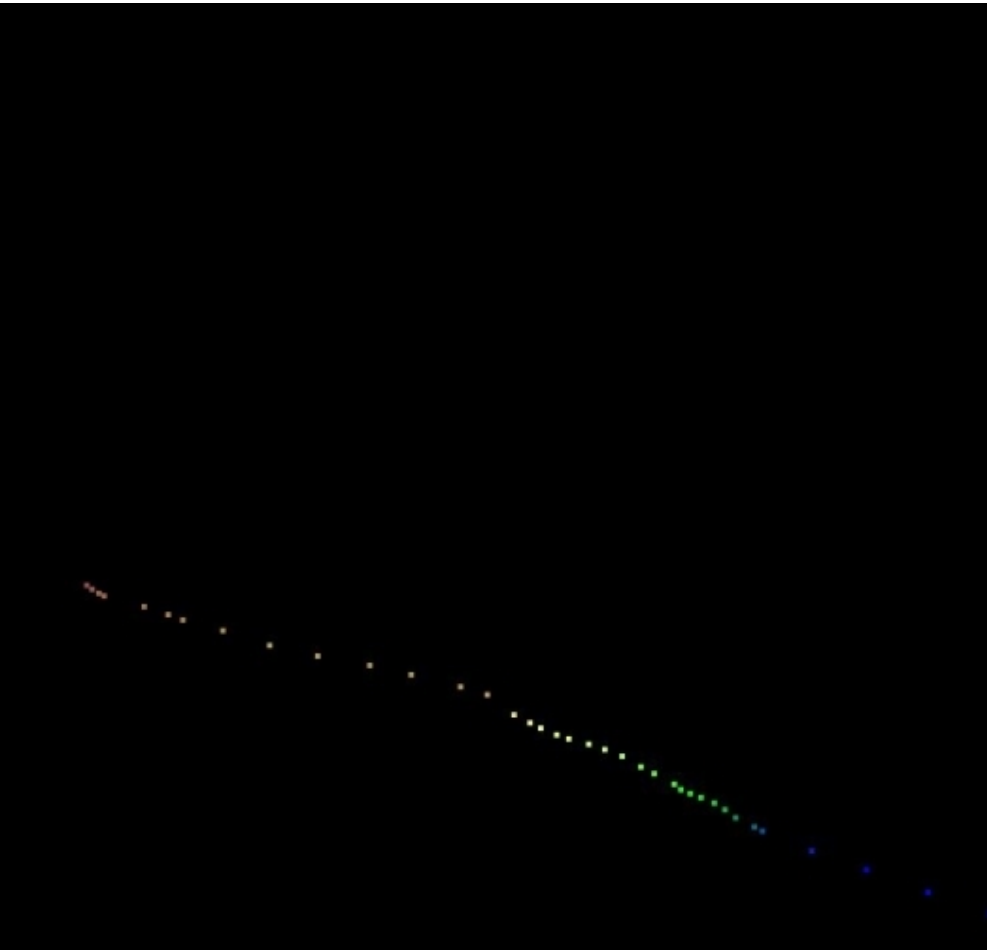
**Baseline UAV surveys: Milford, 28 January 2022**



# Topographic Data



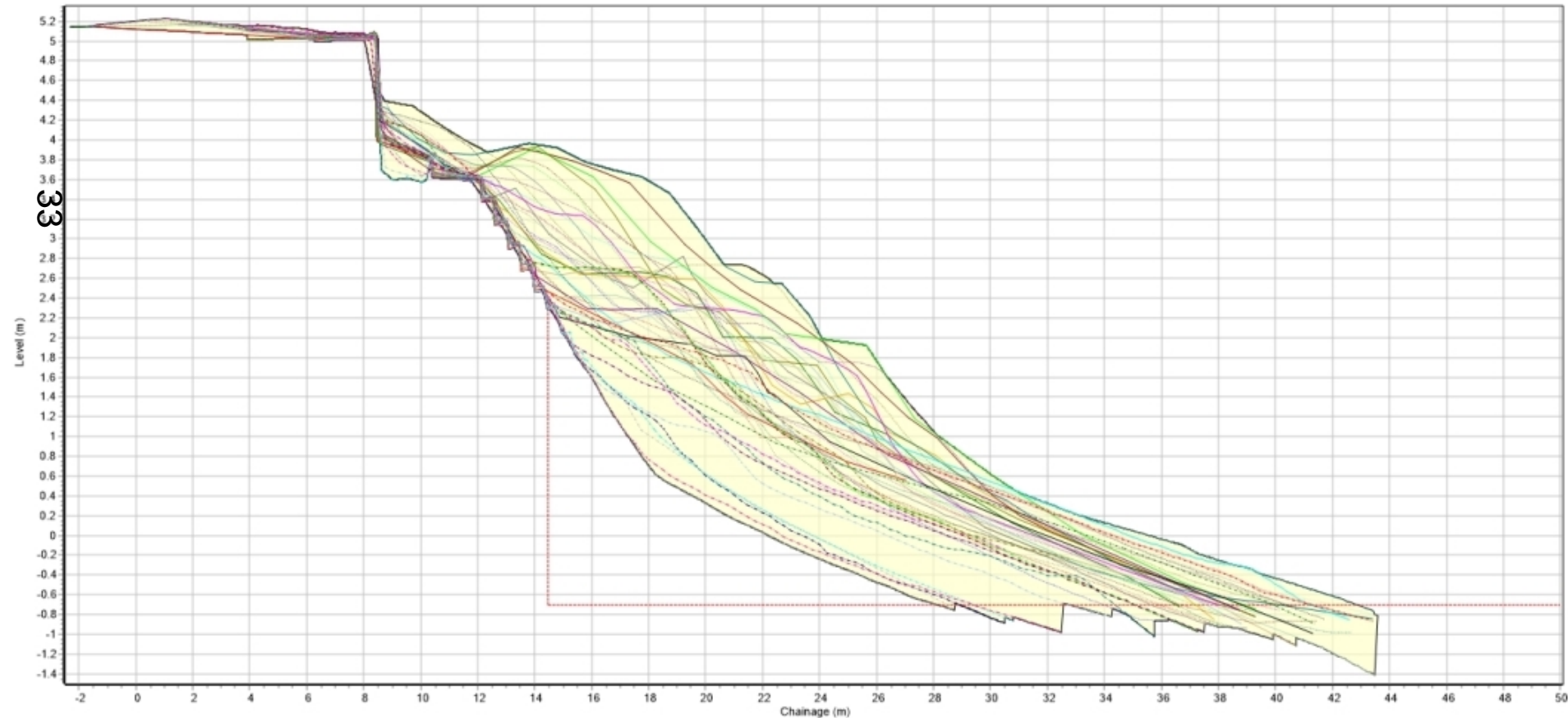
## Profile surveys: Hordle, 23 February 2022



# Topographic Data

## Legacy: Profiles through time at Milford

Profiles: 5f00075



2022-10-27	2022-10-25	2022-09-14	2022-04-29	2022-03-25	2022-02-23	2022-02-22	2021-11-02	2021-07-26	2021-05-05	2021-04-14	2021-04-13	2020-11-13	2020-06-23	2020-05-07	2020-03-03
2020-02-26	2020-02-14	2020-02-05	2019-10-29	2019-08-20	2019-07-08	2019-06-18	2019-04-11	2019-04-10	2019-02-04	2018-09-28	2018-05-29	2018-05-11	2018-04-13	2017-09-20	2017-05-23
2017-04-13	2016-11-14	2016-09-22	2016-07-25	2016-07-22	2016-03-24	2016-03-23	2015-10-14	2015-07-20	2015-04-10	2015-04-02	2014-10-29	2014-09-10	2014-07-14	2014-03-04	2014-03-03
2014-02-10	2013-09-23	2013-06-21	2013-03-22	2013-03-01	2013-02-27	2012-11-23	2012-10-29	2012-07-25	2012-03-28	2012-03-26	2012-02-23	2012-01-04	Design Profile	Master Profile	Profile Envelope

# Topographic Data

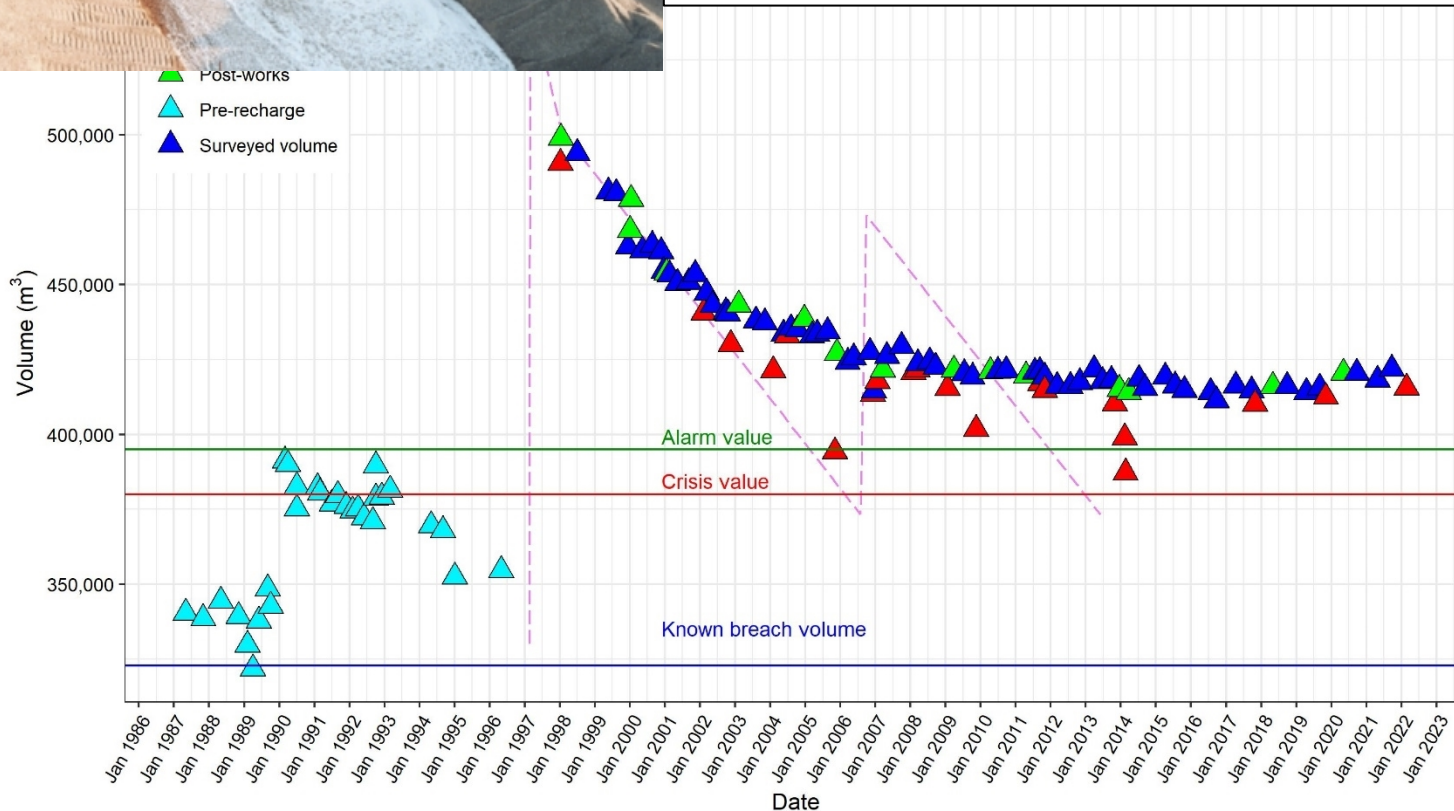


## BMP implemented in 1996

50-year design life scheme with episodic recharge

➔ Monitoring informed a delay in recharge by over 5 years, resulting in large cost-saving

➔ Post-storm inform recovery of barrier after event



# Topographic Data

## Standard survey regime in NFDC area

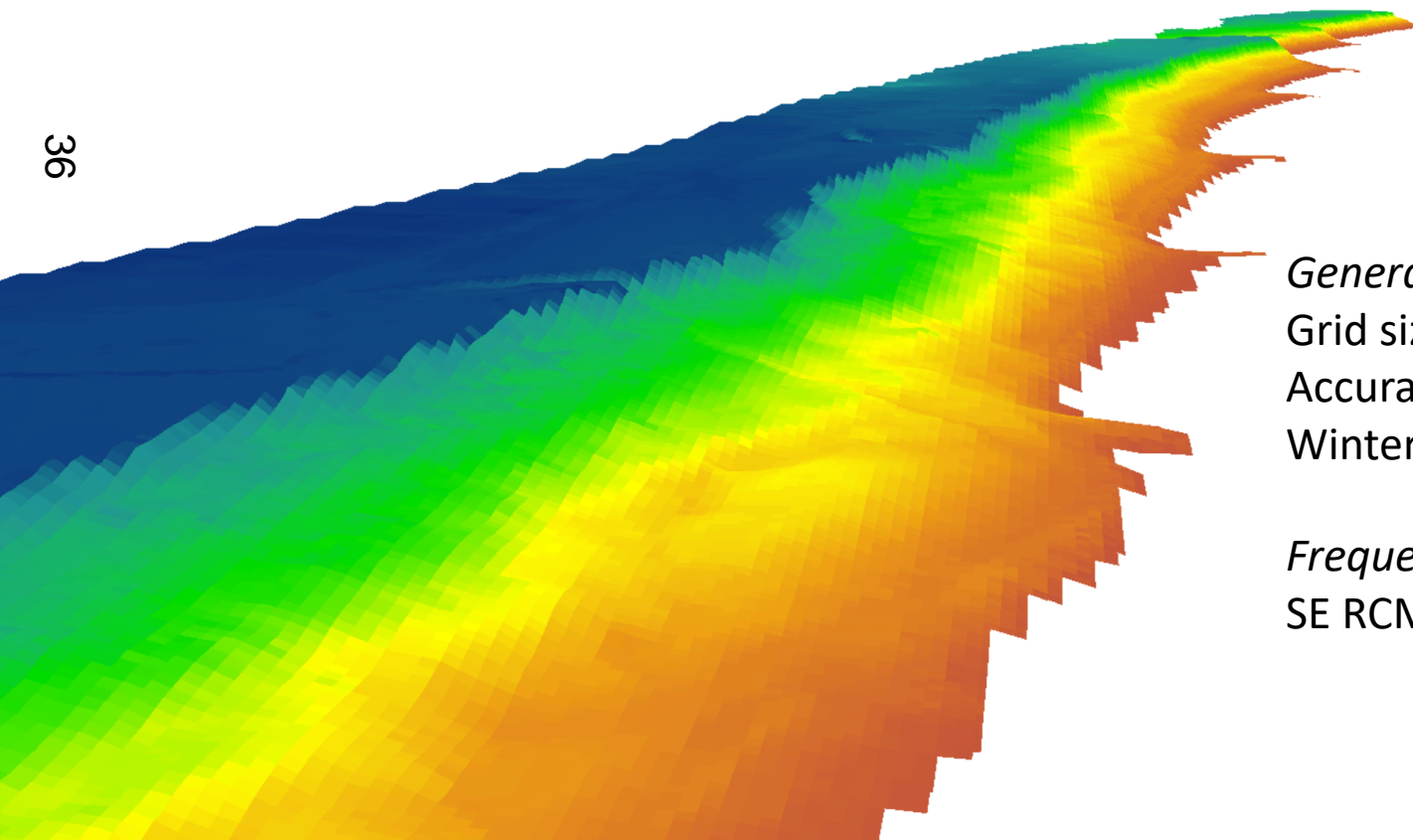
Survey Unit		2021/22	2022/23	2023/24	2024/25	2025/26	2026/27
5cSU10	Calshot Spit	1 Profile	1 Profile	Baseline	1 Profile	1 Profile	1 Profile
5cSU11	Cadland			Baseline			
5cSU12	Lepe			Baseline			
5cSU13	Beaulieu River						
5cSU14	Park Shore/Gull Island			Baseline			
5cSU15	Sowley/Park Shore			Baseline			
5cSU16	Elmer's Court						
5cSU17	Lymington River						
5cSU18	Pennington						
5cSU19	North Point	Baseline, 1 profile	Baseline, 1 profile	Baseline, 1 profile	Baseline, 1 profile	Baseline, 1 profile	Baseline, 1 profile
5fSU01	Hurst Spit	Baseline, 1 profile	Baseline, 1 profile	Baseline, 1 profile	Baseline, 1 profile	Baseline, 1 profile	Baseline, 1 profile
5fSU02	Milford	Baseline, 1 profile	Baseline, 1 profile	Baseline, 1 profile	Baseline, 1 profile	Baseline, 1 profile	Baseline, 1 profile
5fSU03	Hordle	1 Profile	1 Profile	Baseline	1 Profile	1 Profile	1 Profile
5fSU04	Becton to Hordle			Baseline			
5fSU05	Naish to Barton		Baseline				

LiDAR year

# Lidar Data

Provided in kind by the EA's Geomatics team

## Barton Cliffs in 2017 Lidar capture



*General:*

Grid size: 1m

Accuracy: +/-0.2m

Winter, leaf off

*Frequency:*

SE RCMP: Every other year

# Lidar Data

## Example: National Coastal Erosion Risk Map 2

37

Lidar data used to assess cliff recession rates



# Aerial Photography

*General:* GSD: 0.1m | MLWS | Summer, leaf on

*Frequency:* Every two years (2022, 2025)

## **Barton Cliffs throughout the years: 2008**



# Aerial Photography

*General:* GSD: 0.1m | MLWS | Summer, leaf on

*Frequency:* Every two years (2022, 2025)

## **Barton Cliffs throughout the years: 2013**



# Aerial Photography

*General:* GSD: 0.1m | MLWS | Summer, leaf on

*Frequency:* Every two years (2022, 2025)

## **Barton Cliffs throughout the years: 2016**



# Aerial Photography

*General:* GSD: 0.1m | MLWS | Summer, leaf on

*Frequency:* Every two years (2022, 2025)

## **Barton Cliffs throughout the years: 2019**



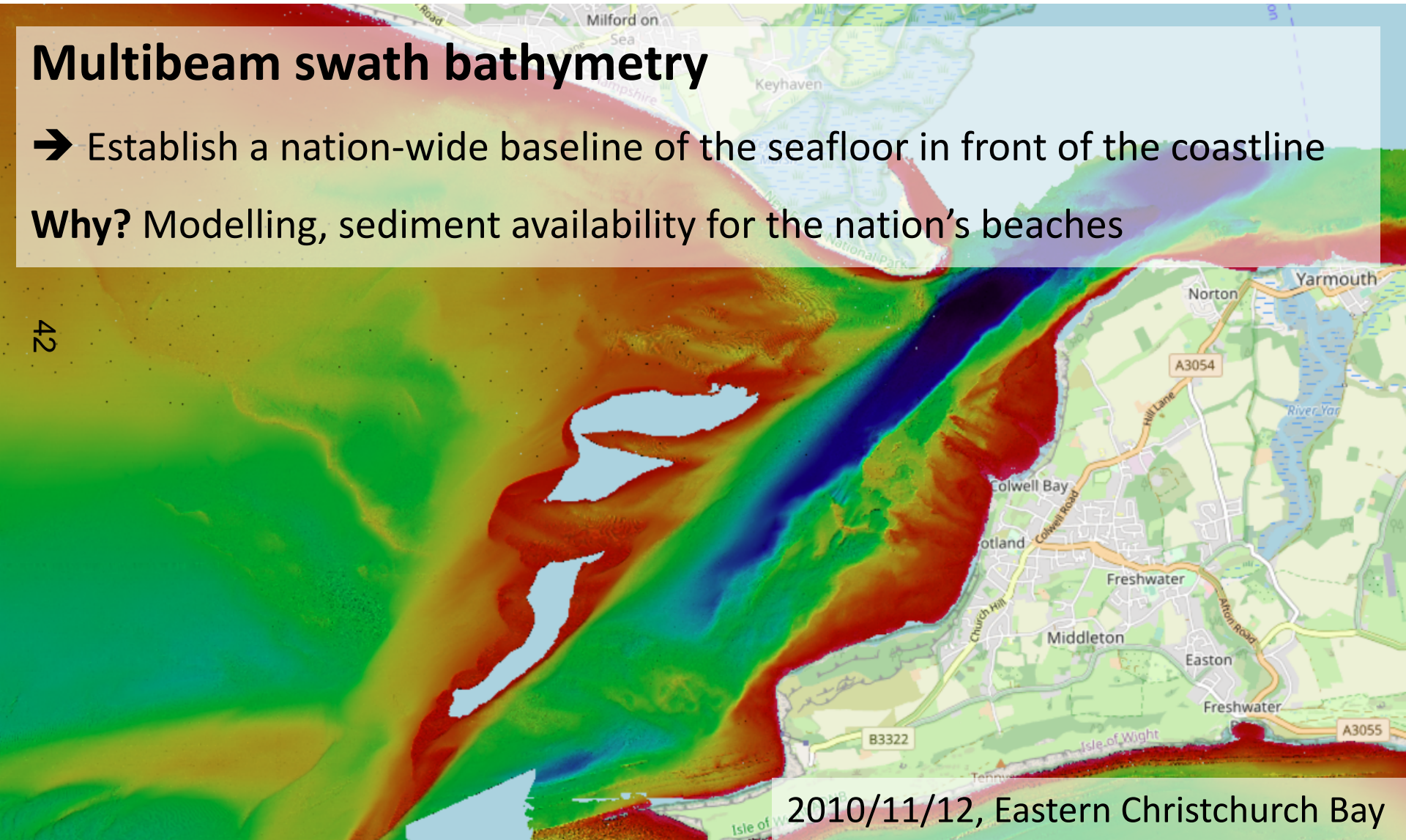
# Bathymetry

## Multibeam swath bathymetry

➔ Establish a nation-wide baseline of the seafloor in front of the coastline

**Why?** Modelling, sediment availability for the nation's beaches

42



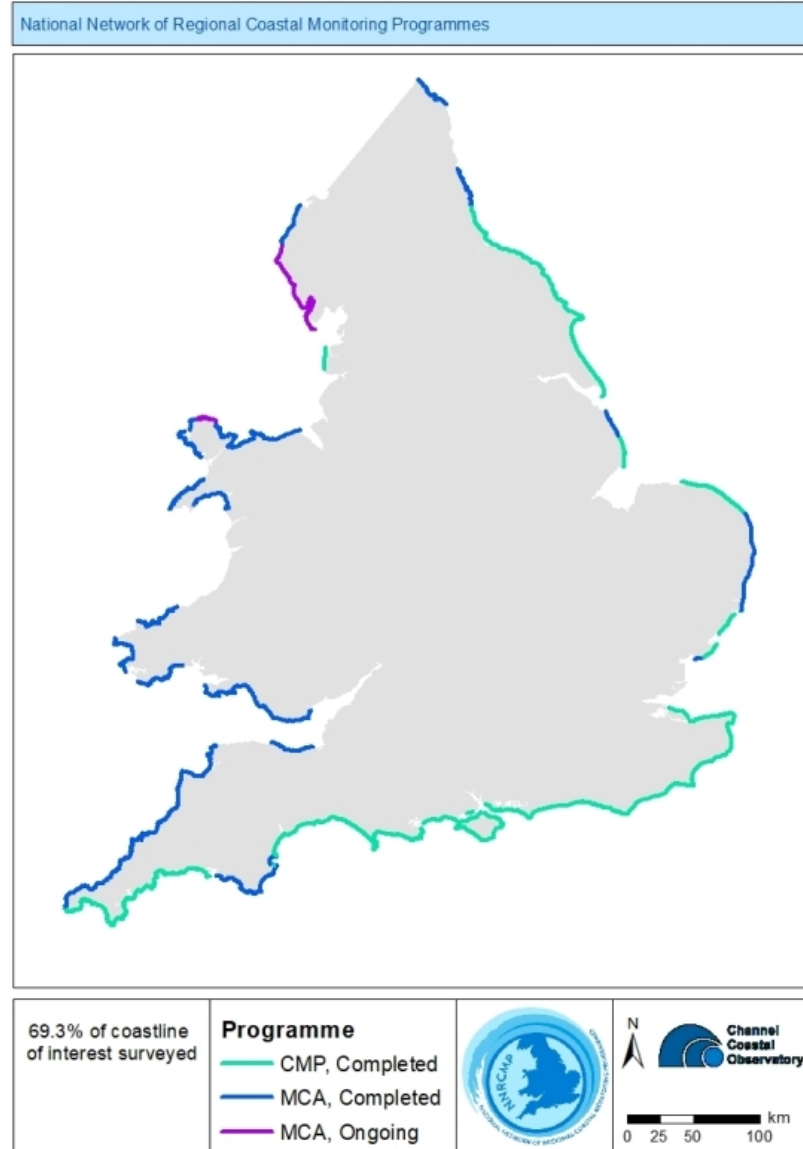
# Bathymetry

## Filling the 'white ribbon'

~70% nationwide coverage

90+% coverage in Southeast

➔ Collaboration with the MCA and UKHO



# Bathymetry



## Partnership with MCA and UKHO

Extend CHP surveys 'inshore' to include areas of interest to the RMA's

44 IHO Order 1a standard data  
→ QA by the UKHO

Share the cost of procurement of swath bathymetry surveys for areas of mutual interest

→ Optimize public expenditure

Data is made freely available via the coastal monitoring website

### MEMORANDUM OF AGREEMENT BETWEEN

New Forest District Council,

Teignbridge District Council,

Metropolitan Borough Council of Sefton,

Scarborough Borough Council,

East Riding of Yorkshire Council

and

Maritime & Coastguard Agency

March 2022

Sefton Council 

 **SCARBOROUGH**  
BOROUGH COUNCIL

 **Teignbridge**  
.gov.uk

 **EAST RIDING**  
OF YORKSHIRE COUNCIL

  
Maritime &  
Coastguard  
Agency

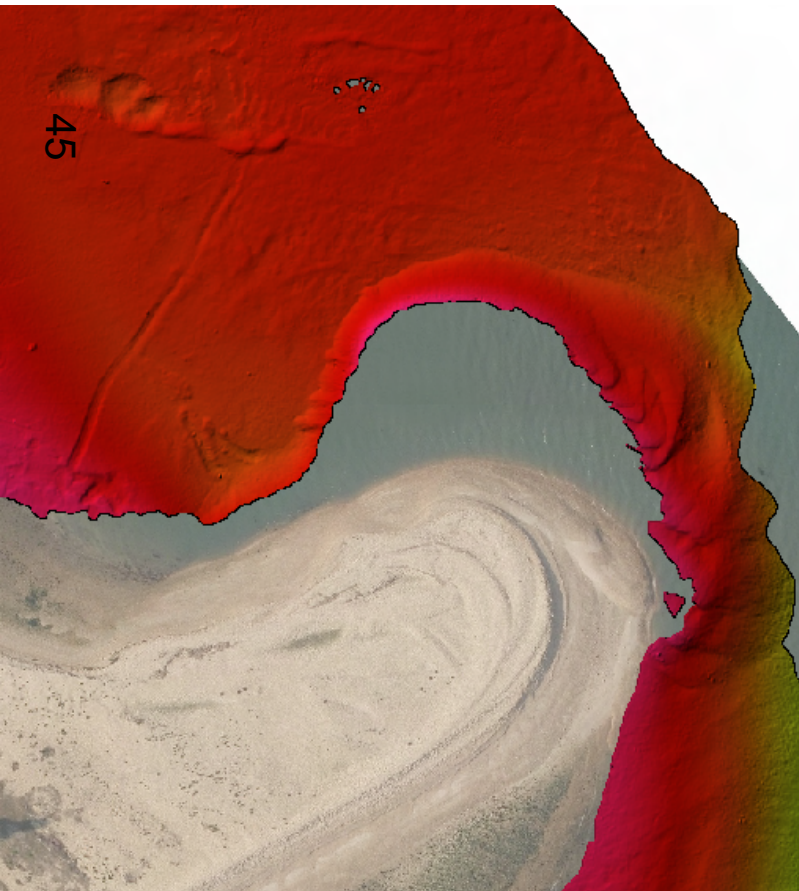
 **New Forest**  
DISTRICT COUNCIL

# Bathymetry

*Frequency: Christchurch Bay (2023), West Solent (2023)*

**In-house multibeam**

➔ **Norbit iWBMS**

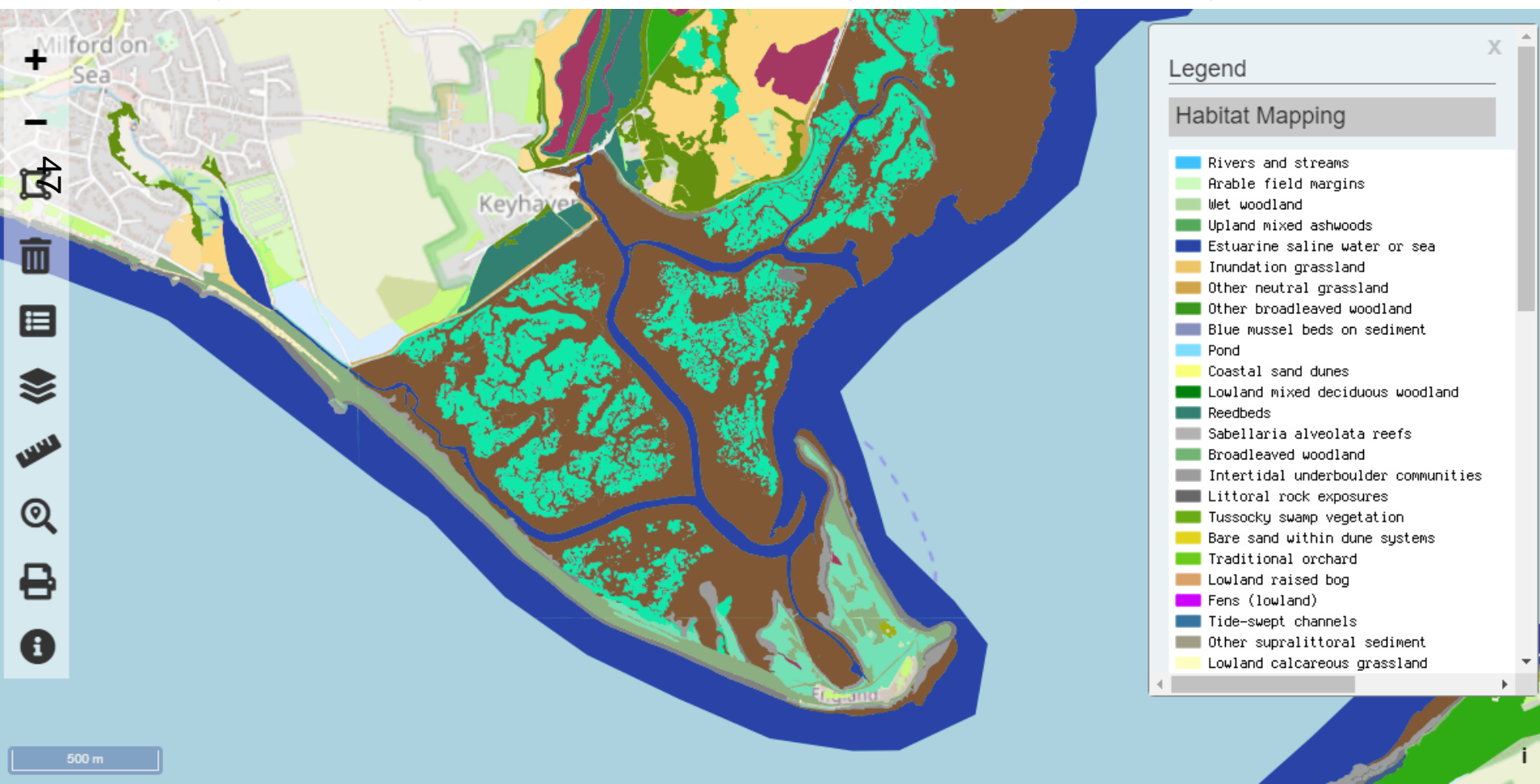




# Habitat Mapping

Frequency: Once per phase (2026)

**Why? Examples:** Habitat compensation, adaptation



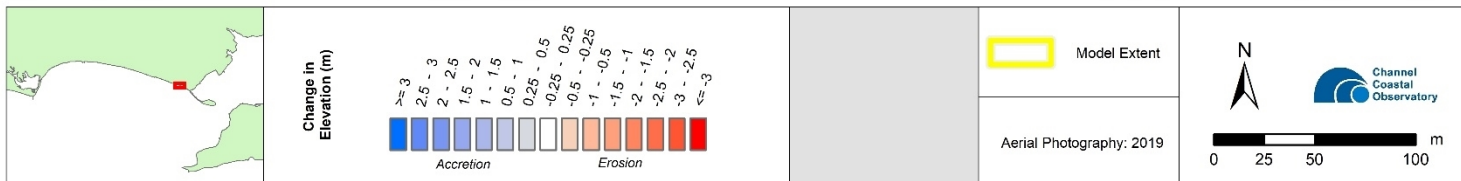
# Incident Response

## Baseline post storm: Milford, 20 August 2019

Southeast Regional Coastal Monitoring Programme



48



Change in elevation (Topographic Difference Model) - Post-works 08/07/2019 to Post-storm 20/08/2019

Milford-on-Sea: 5fSU02

# Incident Response

## Asset scan: Hurst Castle, 5 March 2021



# Incident Response

## Post-storm UAV survey: Hordle, 25 March 2022

Ortho-photo from UAV

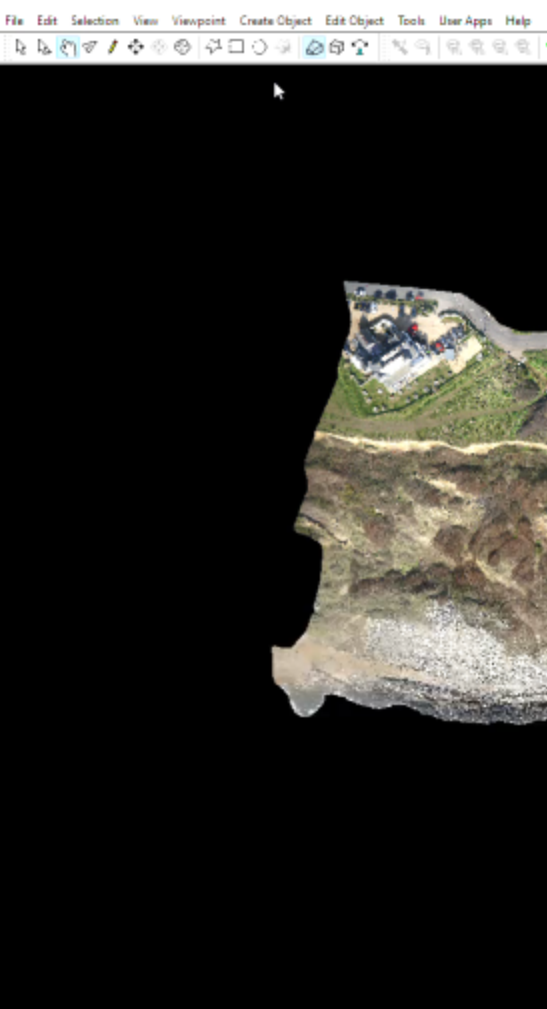
50  
Monitor the positions of  
the beach huts after  
storms Eunice and  
Franklin in February  
2022



# NFDC Surveying



**Barton Cliffs Monitoring: 1995 - ongoing**      *Frequency: Monthly*

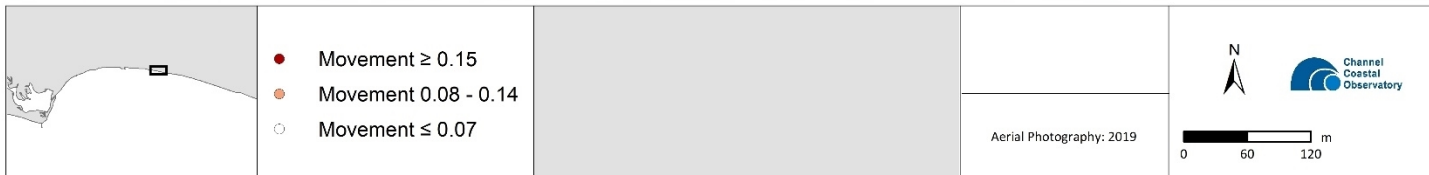


# NFDC Surveying

## Barton Cliffs Monitoring

Frequency: Monthly

Barton Cliffs 25/02/2022 - 23/03/2022



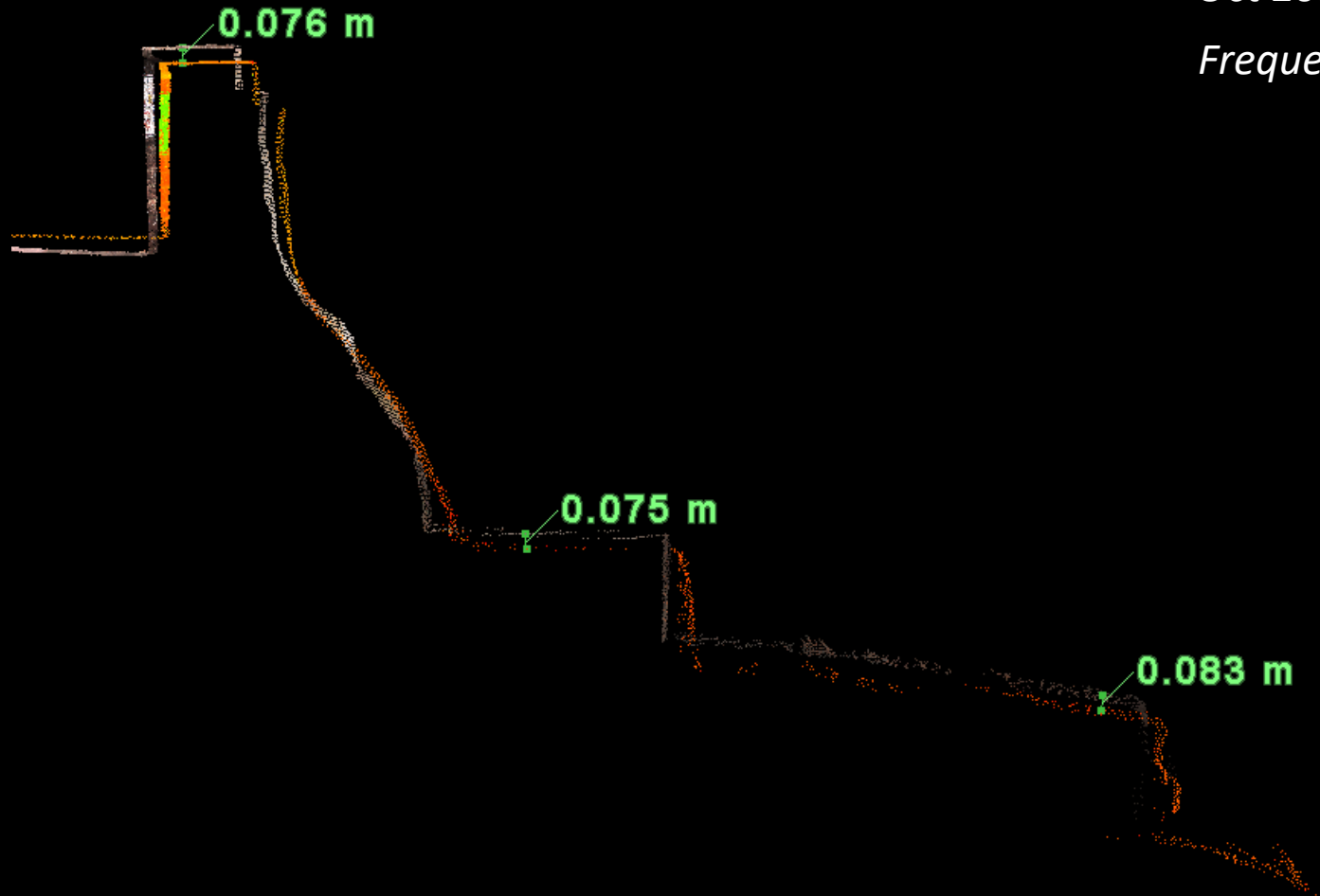
Barton-on-Sea

# NFDC Surveying

## Lymington Seawall monitoring

Oct 2016 – Feb 2022

*Frequency: quarterly*



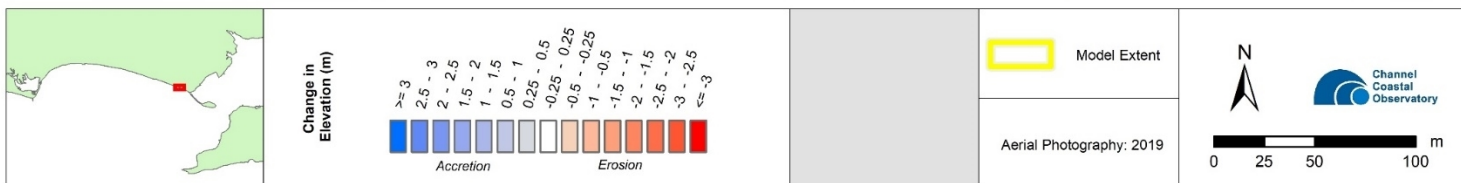
# NFDC Surveying

## Pre and post beach nourishment work surveys

Southeast Regional Coastal Monitoring Programme



54



Change in elevation (Topographic Difference Model) - Pre-works 14/09/2022 to Post-works 25/10/2022

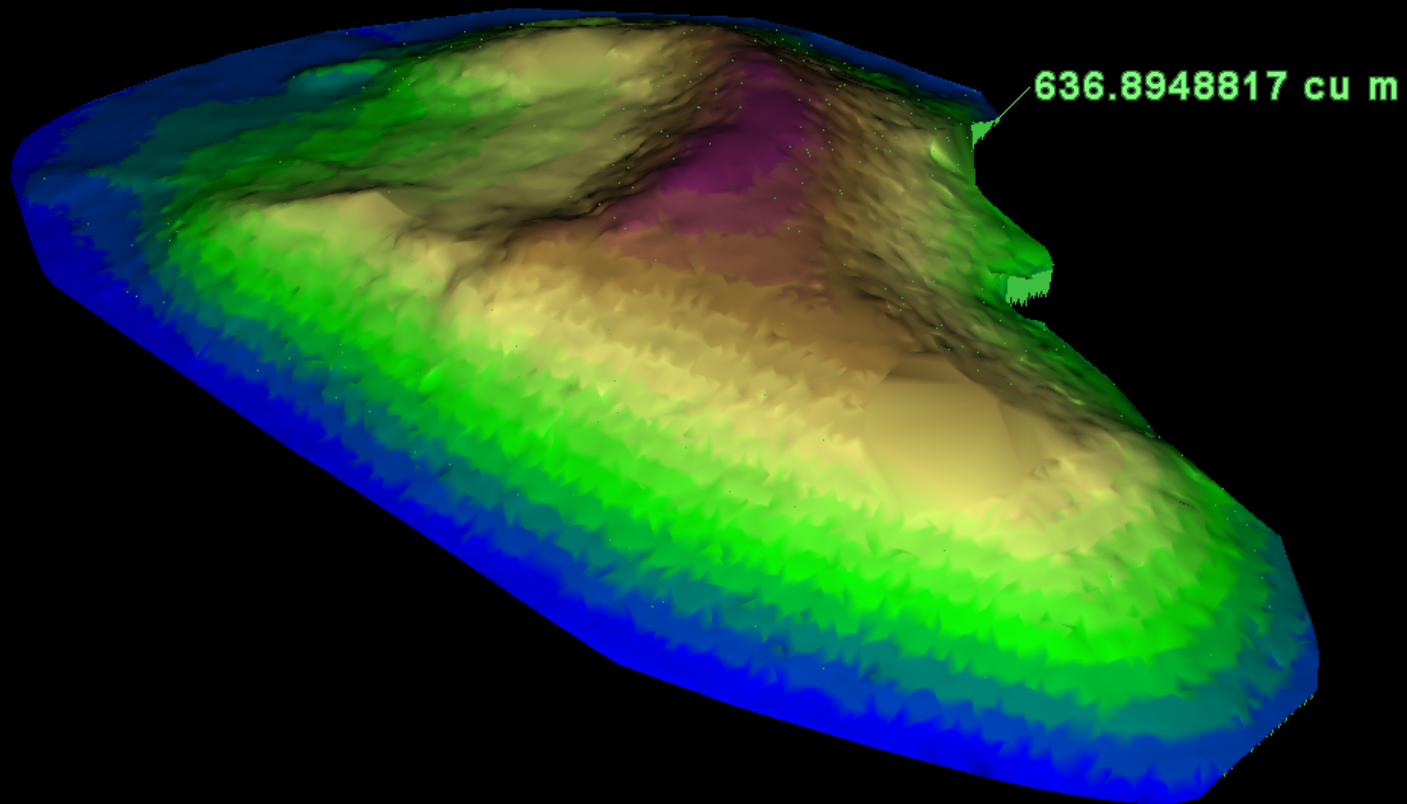
Milford-on-Sea: 5fSU02

# NFDC Surveying



## Calshot stockpile volume measurements

4<sup>th</sup> January 2023



# Innovation

**Trials of new ocean technologies:**  
Datawell CAT4 temperature  
4D Ocean ASV Harry



# Southeast RCMP Programme Update

## Phase III: 2021-2027

### **Data collected so far:**

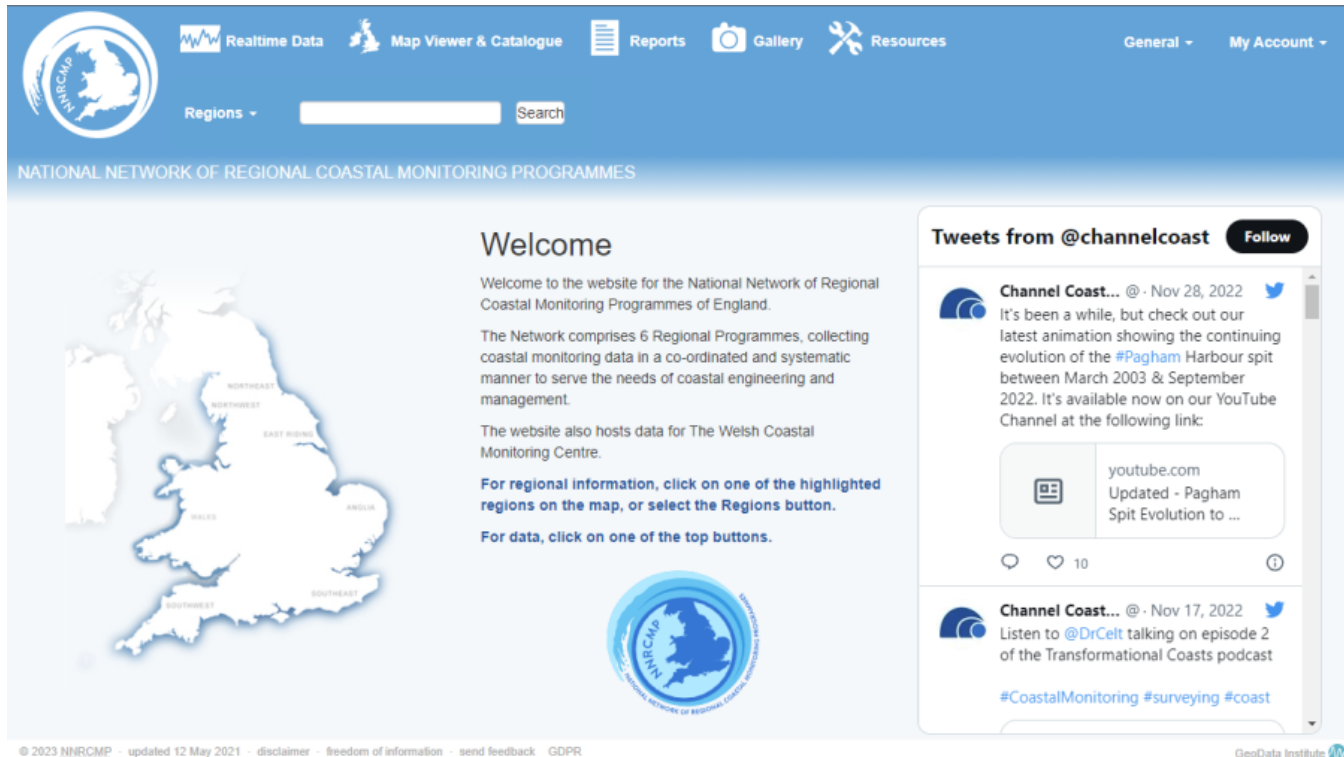
- 21 years of wave data, 14 years of tide data and 17.5 years of meteorological data
- 101 beach profile surveys, 59 baseline surveys
- Full LiDAR capture (2021/23)
- Full Aerial photography capture (2022)

### **Planned for 2023-2027:**

- Continued wave, tide and met real-time data
- 473 beach profile surveys, 357 baseline surveys
- 2 epoch of full LiDAR capture
- 1 epoch of aerial photography (2025)
- Swath bathymetry programme (incl. Christchurch Bay, West Solent)

# Questions

[www.coastalmonitoring.org](http://www.coastalmonitoring.org)



The screenshot shows the homepage of the National Network of Regional Coastal Monitoring Programmes (NNRCMP). The header includes navigation links for Realtime Data, Map Viewer & Catalogue, Reports, Gallery, and Resources, along with user options for General and My Account. A search bar and a Regions dropdown menu are also present. The main content area features a map of the United Kingdom divided into six regions: North East, North West, East of England, Wales, South West, and South East. A 'Welcome' message states that the network collects coastal monitoring data in a co-ordinated and systematic manner to serve the needs of coastal engineering and management. It also mentions that the website hosts data for The Welsh Coastal Monitoring Centre. A tweet from @channelcoast is displayed on the right, mentioning a YouTube video about the Pagham Harbour spit evolution. The footer contains copyright information for NNRCMP (2023) and a feedback button.

58

We would appreciate your feedback on the Website and Map Viewer [Feedback](#)

[cco@noc.soton.ac.uk](mailto:cco@noc.soton.ac.uk)



**New Forest**  
DISTRICT COUNCIL

**ENVIRONMENT &  
SUSTAINABILITY OVERVIEW &  
SCRUTINY PANEL**

**WATER SAFETY ON THE NFDC  
COASTLINE - UPDATE**

**January 2023**

**Minute Item 28**

# What are we doing?

Reviewing coastal sites within NFDC ownership or management (leased)

The LGA states that “Councils play a vital role in tackling water safety in their area.” As a coastal authority water safety is paramount in ensuring that the public remain safe whilst enjoying the water and that the Council fulfils its legislative responsibilities in providing support, guidance and the relevant equipment to areas in need.

Work will include:

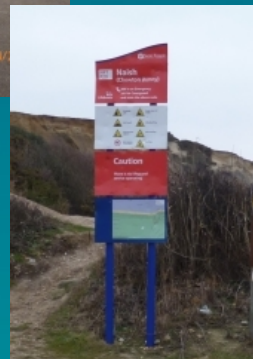
- Develop a “Coastal Water Safety Policy”
- Prepare a Keyhaven River Marine Safety Management System (MSMS)
- Identifying the coastal sites
- Undertaking risk assessment for each site
- Review site signage & public rescue equipment
- Implement findings of risk assessments & reviews of sites
- Review of inspection regime & roles
- Engaging with a competent supplier

# Why are we doing this?

## Review of coastal sites required

- Undertaken by H&S team supported by RNLI
- Review focused on main beach sites – Calshot, Hurst, MoS, Hordle & BoS
  - Did not include other coastal sites owned/managed by NFDC
- To consider any new or updated guidance/legislation
- This review did result in control measures being put in place at the beach sites
  - New and updated signage
  - Public Rescue Equipment installed

61



# Sites

There are a variety of sites across the district:

- Beaches
- Slipways
- Keyhaven River
- Quays
- Waterways
- Swim zone
- Structures
- Land adjacent to tidal water
- Completion by 31 March 2023



Typical hazards:

- Tides & currents
- Vessel and tidal surge
- Changing beach levels
- Edges adjacent to water
- Storm waves
- Water activities

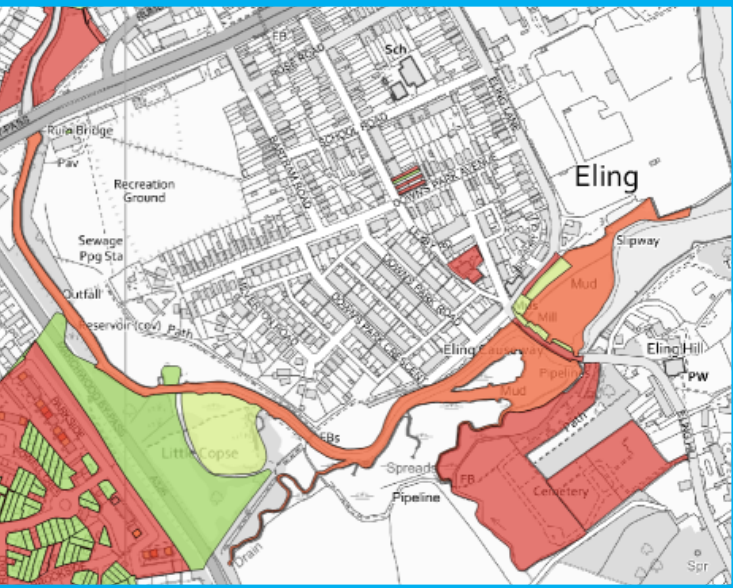
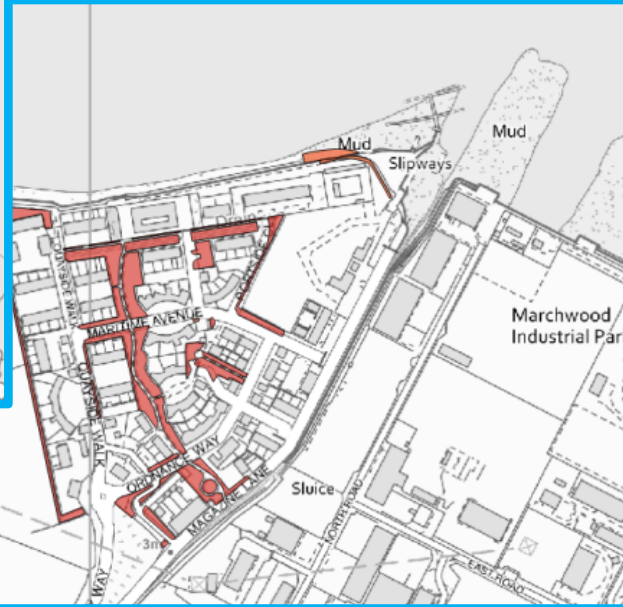
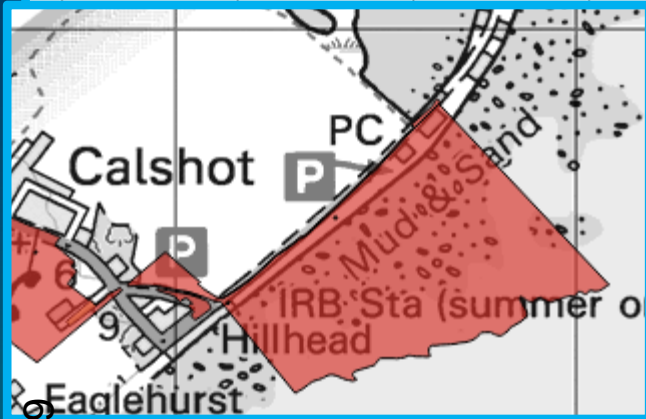
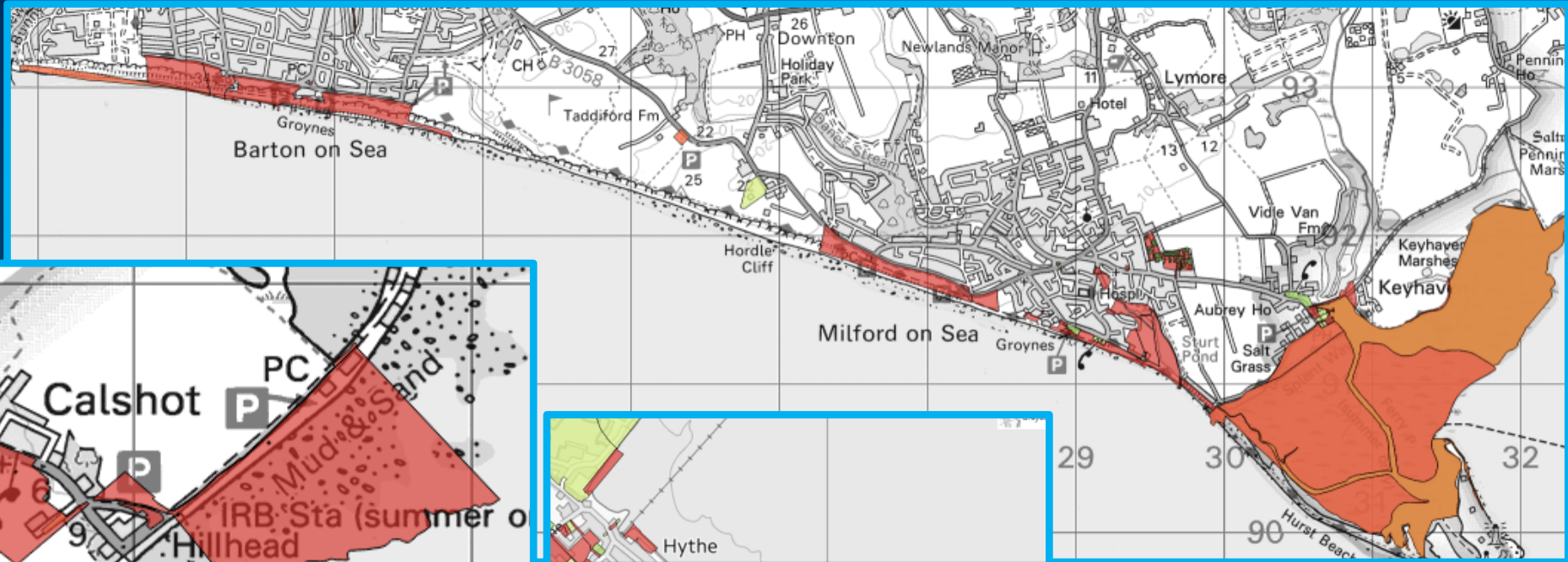
# Example Sites

## NFDC Ownership

Type	No. of Sites	Example Sites
Beach	4	Hordle, Calshot, MoS & BoS
Land adjacent to tidal water	13	Eling cemetery, Shore Rd, Hythe, Bath Rd, Lymington
Quay	6	Eling Lane, Eling. Quayside Walk, Marchwood. Lymington Quay, Keyhaven
Slipway	2	Keyhaven & Calshot

## NFDC Leased

Type	No. of Sites	Example Sites
Beach	2	Foreshore Hurst & Christchurch Bay
Land adjacent to tidal water	1	Bartley Water
Quay	1	Admiralty Quay, Marchwood
River	1	Keyhaven



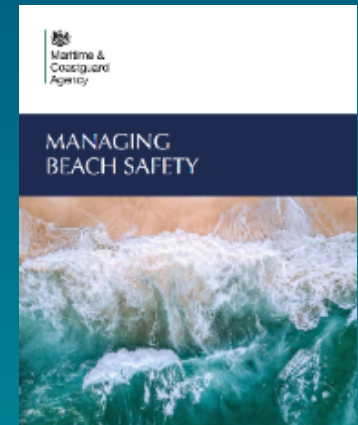
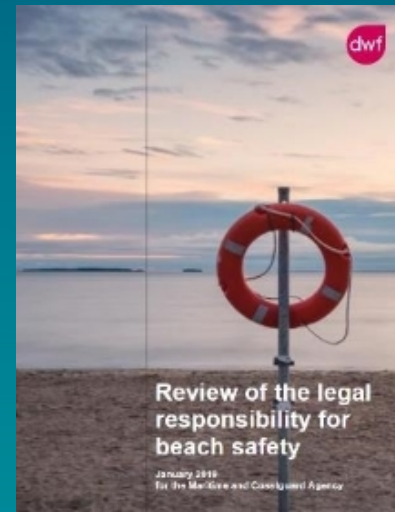
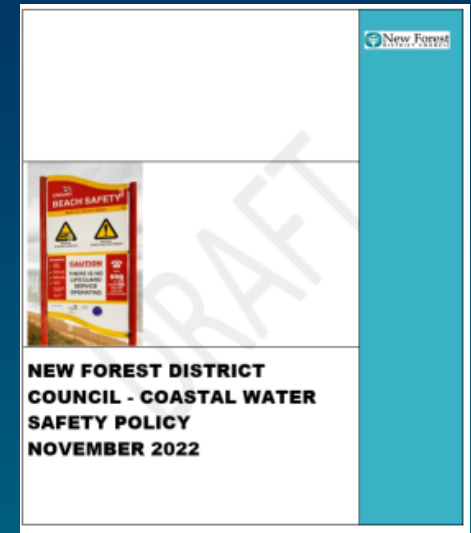
# Work Completed To Date & Next Steps

## Information Gathering:

- Identifying relevant guidance, e.g.
  - RNLI guidance for Public Rescue Equipment and signage
  - MCA – Managing Beach Safety
  - ROSPA – Local Authority Approaches to Managing Water Safety
- Draft Water Safety Policy being prepared
- Initial engagement with RNLI
- 65 Identifying specific sites and associated hazards

## Next

- Appointment of RNLI as competent supplier to undertake site assessments– April/May 2023
- Water Safety Policy consultation and review
- Implement identified actions



# Work Completed To Date & Next Steps - Keyhaven

## Information Gathering:

- NFDC has a responsibility to ensure that the Keyhaven river management and operations comply with the Port Marine Safety Code (PMSC) .
- NFDC need to have in place a Marine Management Safety Scheme (MSMS) which ensures compliance with the PMSC wherever possible (Note: as we are NOT a statutory harbour authority it is 'recommended not mandatory')
- A suitable candidate for a 'Designated person' (DP) (ex-Yarmouth harbour master) has been identified to enable NFDC to reach the required standards.

## Next

- Appointment of 'DP' as consultant to be confirmed
- Audit by DP arranged for 17th January 2023
- MSMS approved by EMT
- Keyhaven Duty Holder (Strategic Director) confirmed as per MSMS



# Questions?

67

17/JAN/2012



This page is intentionally left blank

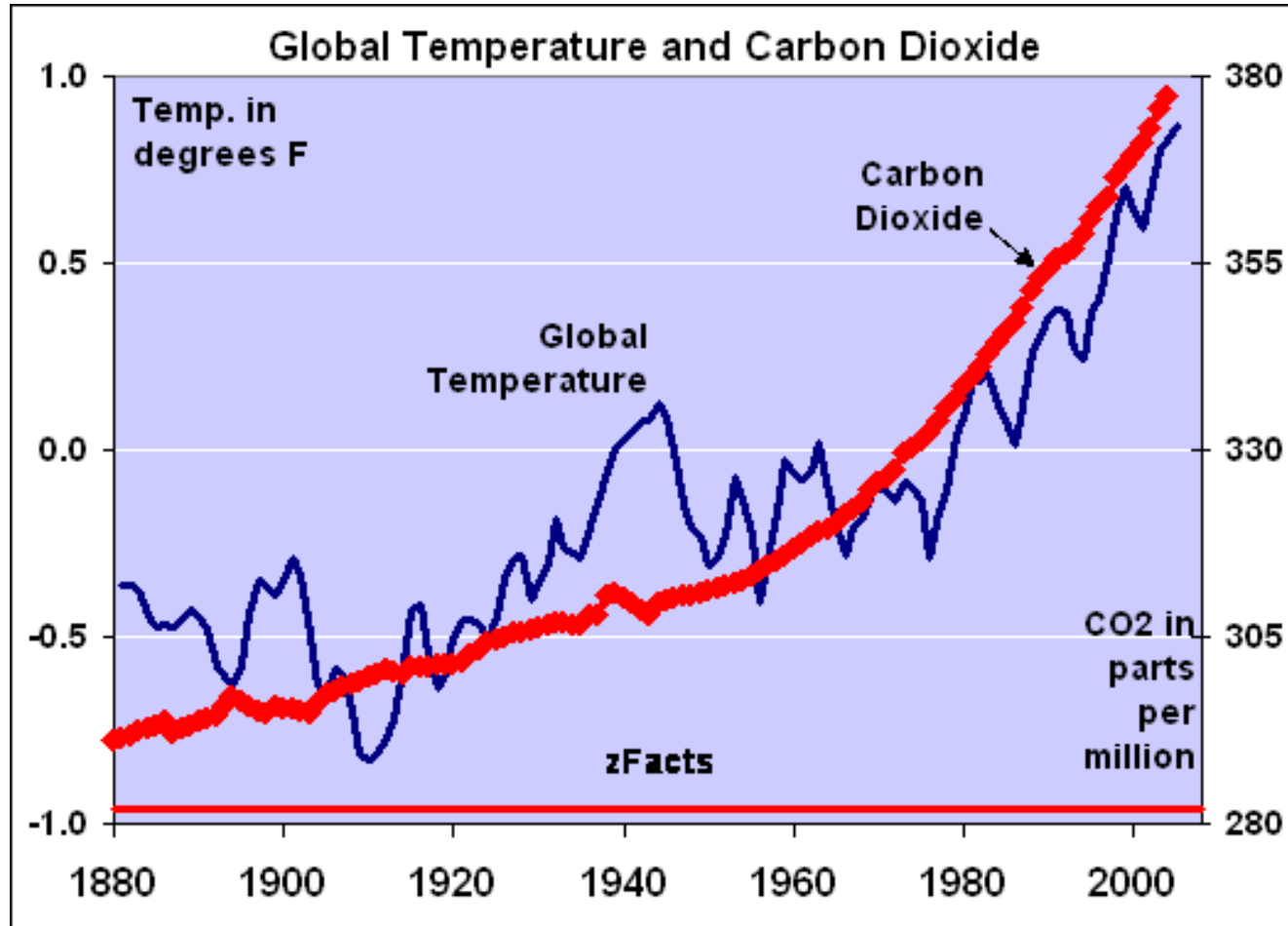
# Climate Change

**Supplementary Planning Document (SPD)**

# Overview

- **Background and context**
- **The Climate Change SPD**
- **Next steps**
- **Questions**

# Global warming



# Changing climate

## South East England

	Season	Central estimate
Average rise in temperature	Summer	+ 3.9°C
	Winter	+ 3°C
Change in average rainfall	Summer	- 22%
	Winter	+ 22%
Sea level change	All year	+ 17cm

UK Climate Projections 2018, (with no policy change)

# CO<sub>2</sub> from development

- **40%** of UK CO<sub>2</sub> emitted by households
- **2 tonnes** CO<sub>2</sub> per annum to run a typical recent home - 75% from the gas boiler
- A best practice home consumes **75% less energy** than the above 'typical' home
- A best practice home can be **zero carbon to operate** with solar panels fitted
- **£20,000+** more to retrofit to best practice later than to build to best practice now
- **50 tonnes** CO<sub>2</sub> emitted to build an average home (embodied carbon)

73

## Buyers of brand-new homes face £20,000 bill to make them greener

Critics say the costs could have been avoided if ministers had agreed to bring in low-carbon standards sooner



The Guardian 23/1/2021

# Climate change response

## Climate change mitigation

- Measures to stabilise or reverse climate change over time
- Reducing greenhouse gas emissions, targeting net zero carbon
- <sup>74</sup>• The Net Zero carbon toolkit

## Climate change adaption

- Measures that respond to the way the climate is changing
- Improving the resilience of buildings and built-up areas to climatic extremes

# National context

- **Climate Change Act 2008** commitment to net zero carbon emissions by 2050
- 75 • **Sixth Carbon Budget 2020** committed to a 78% CO2 reduction target by 2035, compared to 1990 levels.
- **The Planning and Compulsory Purchase Act 2004** requires that local plans include policies for development and land use to contribute to the mitigation of, and adaptation to, climate change.
- **NPPF** “The planning system should support the transition to a low carbon future in a changing climate” (para 152)

# NFDC context

- **NFDC Climate and Nature Emergency declaration 2021**
- **NFDC Local Plan**
  - Policy STR1: Achieving sustainable development ... (iv) Ensuring that new development is adaptable to the future needs of occupiers and future-proofed for climate change ...
  - Policy ENV3: Design quality and local distinctiveness ... New development will be required to: ... (v). Incorporate design measures that improve resource efficiency and climate change resilience and reduce environmental impacts wherever they are appropriate and capable of being effective...
- **Greener Housing Strategy**

# Climate Change SPD 1

## Purpose

- to clarify how developers should address climate change in planning applications, in order to meet Local Plan requirements

## Objective

- To ensure that developments are climate change optimised before detailed plans are submitted for approval

## Mechanism

- Evidenced by a **Climate Change Statement**

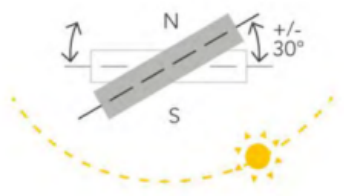
# Climate Change SPD 2

## Mechanisms continued

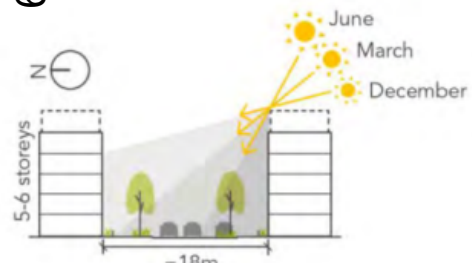
- The SPD sets out best practice approaches or standards that developers are encouraged to target or adopt, to
  - take all practicable steps to decarbonise the running of buildings
  - to be net zero in operation if possible, otherwise net zero ready
  - to make a meaningful start on the more difficult challenge of reducing embodied carbon in construction; and
  - to ensure development is adapted for future climatic extremes.

78

# Climate mitigation 1

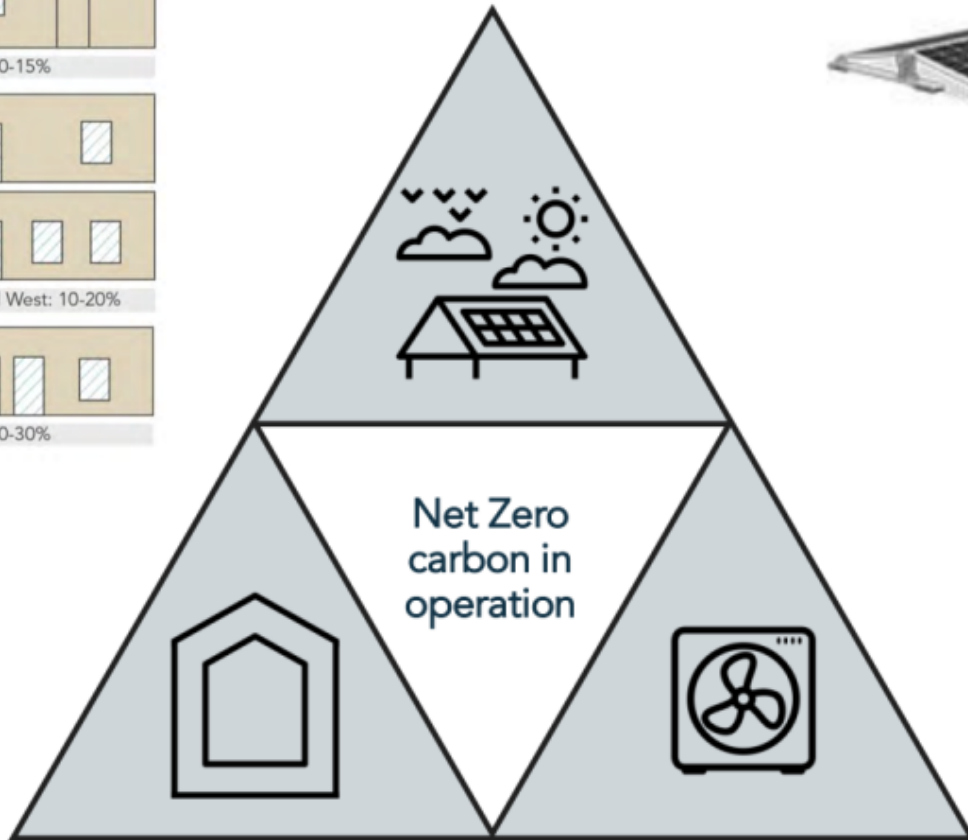
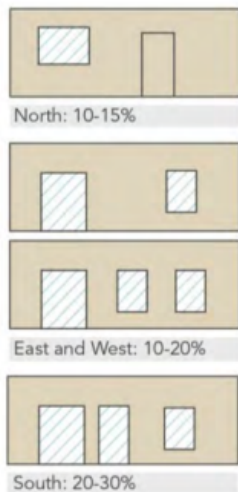


Elevations facing +/- 30° south will benefit from useful solar gains in the winter



**Energy efficient design**

## Renewable energy



**Low carbon heat**

Monoblock or split heat pump

# Climate mitigation 2

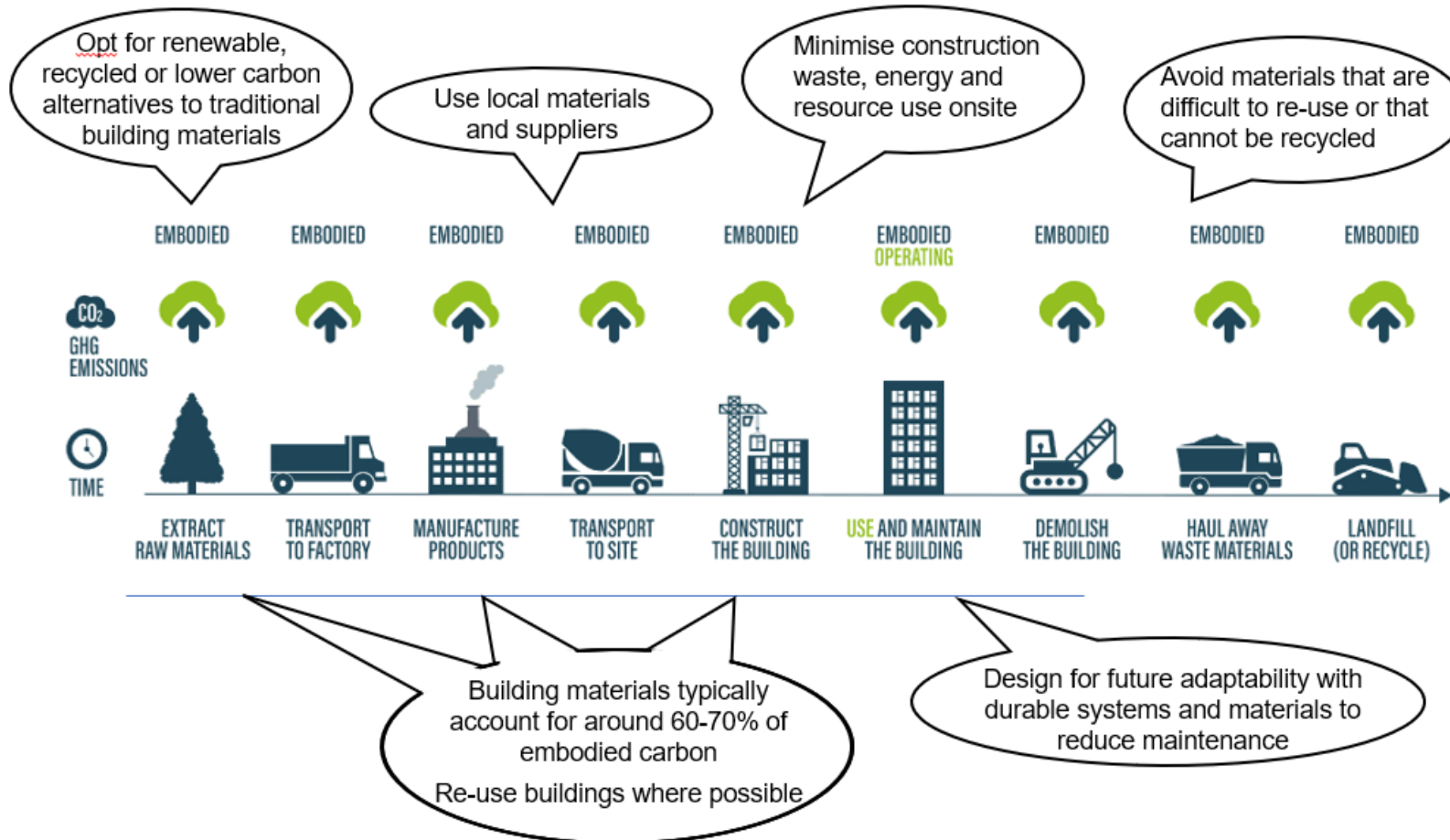
## Enabling sustainable and active travel



# Climate mitigation 3

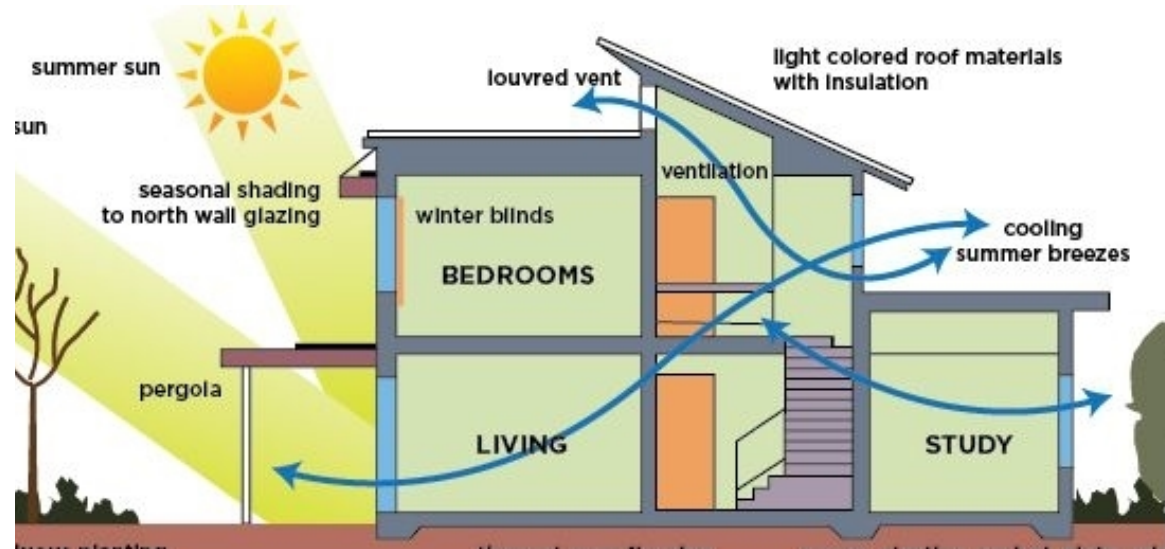
## Reducing embodied carbon emissions

81



# Climate change adaption

82



# Next steps

- **1 March 2023** report to Cabinet recommending SPD publication for public consultation
- ∞ • **May-June 2023** public consultation - after the election Purdah period
- **Summer 2023** review and publish consultation feedback, update SPD
- **Autumn 2023** report updated SPD to Council via Cabinet recommending adoption

# Any questions?



# Climate & Nature Emergency Update

## Environment & Sustainability Overview & Scrutiny Panel

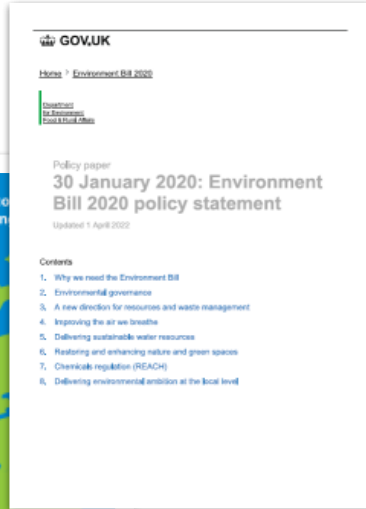
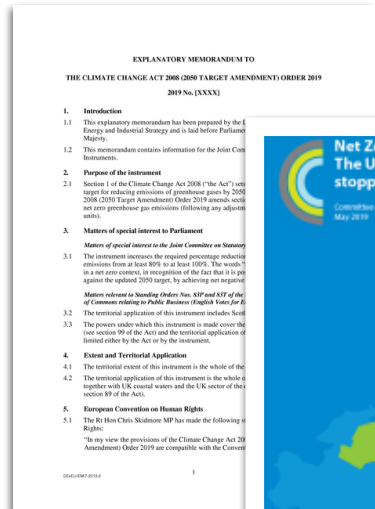
Tuesday 13<sup>th</sup> December 2022

# Climate Change in the New Forest

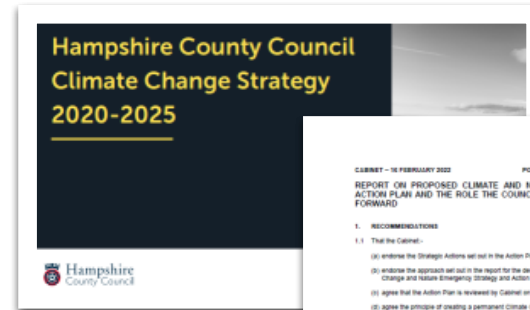
In the NFDC area, we expect to experience:

- Hotter, drier summers
- Warmer, wetter winters
- More frequent and extreme heatwaves, droughts flooding and coastal erosion

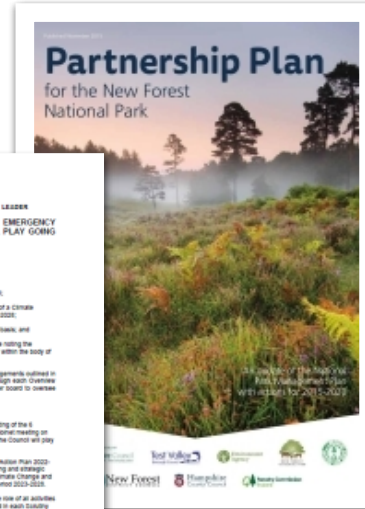
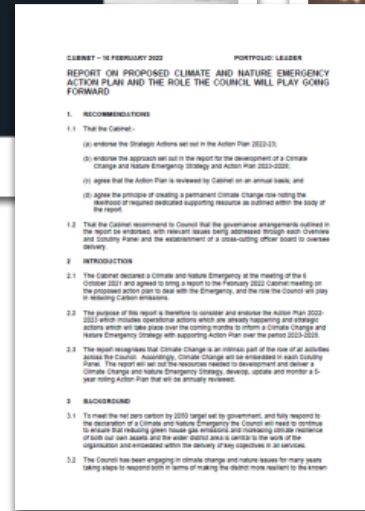
86



National



Local



# What impacts will this have?

## RESIDENTS / BUSINESSES / VISITORS / ECONOMY

- Health & wellbeing
- Accessibility & transportation
- Housing suitability
- Habitat degradation
- Species loss
- Storm damage
- Service delivery
- Food growing
- Resource availability
- Waste generation & processing

# Net Zero by 2050...and much more

- The NFDC Area is estimated to have emitted 928,000 tonnes CO<sub>2</sub>e in 2019
- Compared to Hampshire Districts, we have large emissions but also large carbon sink due to the New Forest environment
- The biggest sources of our area emissions are:
  1. Transport
  2. Homes
  3. Industry
- The Council is estimated to have emitted 3,500 tonnes CO<sub>2</sub>e in 2020/21
- We spent approximately £640k buying 8.8million kWh of energy
- The biggest sources of our area emissions are:
  1. Fleet
  2. Gas
  3. Electricity

8

# Climate & Nature Action in 2022

- Staff engagement
  - Service suggestions
  - Climate champions
  - Energy advice
- Estates
  - Bill validation and metering
  - Building improvements
- Operations
  - Electrification of depots
  - EV fleet
  - Waste strategy
- Greener Housing Strategy
- New build council housing
  - Testwood Social Club exemplar
- Planning
  - Local Plan development
  - PfSH environmental initiatives
  - Green Infrastructure Strategy
  - Climate Change SPD
- Procurement
  - Contract management
  - Supply chain

# Climate & Nature Action from 2023

06

CARBON REDUCTION					
INTERNAL PRIORITIES			EXTERNAL PRIORITIES		
Fleet	Gas	Electric	Industry	Road Transport	Homes
Depot electrification	Building fabric / insulation	LED lighting in buildings	Solent Cluster	LTP4 / LCWIP	Community Energy South
EV fleet replacement	BMS systems	Street lighting	Industry engagement	EV charging network	Retrofit / Greener Housing
Service delivery optimisation	Boiler replacement	Renewable energy	Carbon capture & storage	Public transport improvements	Local Plan
BUSINESS AS USUAL IMPROVEMENTS					
Sustainable policies, plans, services & procurement			Net zero infrastructure, investment & engagement		

CLIMATE ADAPTATION					
INTERNAL PRIORITIES			EXTERNAL PRIORITIES		
Buildings	Assets	Staff	Flooding	Coastal Erosion	Heatwaves
Location risk assessment	Natural assets e.g. open space	Climate Champions	Built infrastructure	Christchurch Bay / Harbour FCERM	NHS / Public Health
Temperature adaptation	Fixed assets e.g. bins	Emergency preparedness	Natural infrastructure	Hurst Spit to Lymington FCERM	Community Resilience Plans
Storm resilience	Vehicles e.g. fleet / grey	Business continuity	Catchment partnerships	Durlston to Hurst SRM Programme	Water conservation
BUSINESS AS USUAL IMPROVEMENTS					
Service risk assessment, adaptation plans & comms			Area risk assessment, adaptation plans & comms		

NATURE RECOVERY					
INTERNAL PRIORITIES			EXTERNAL PRIORITIES		
Biodiversity	Connectivity	Stewardship	Biodiversity	Connectivity	Stewardship
NFDC land studies	Nature corridors / Habitat banking	Local Plan / SPDs / GI strategy	Environmental surveys / data	Local Nature Recovery Strategy	Environment Act / regulations
Habitat protection	Ecology infrastructure	Maintenance / upkeep	Habitat protection	Connectivity of strategic sites	BNG Credits / Habitat banking
Habitat creation	Local partnerships	Staff volunteering	Habitat creation	Active travel / accessibility	Ecology without boundaries
BUSINESS AS USUAL IMPROVEMENTS					
Nature Recovery in policies, strategies & decisions			Nature protection, enhancement & partnerships		

PROGRAMME MANAGEMENT					
INTERNAL PRIORITIES			EXTERNAL PRIORITIES		
Communications	Governance	Funding	Communications	Data	Partnerships
Newsletters / updates	CC&NE Steering Group	NFDC internal budget	Social / online / print media	Carbon / Climate / nature data	Hampshire County Council
Staff / member training	Portfolio Holder	Central Government	External webpages	Public Reporting	New Forest National Park
Forest Net resources	Decision making	Private investment	Public events	External verification	Professional organisations
BUSINESS AS USUAL IMPROVEMENTS					
CC&NE principles embedded in NFDC culture & services			Residents, businesses, visitors support CC&NE principles		

# Hampshire Minerals and Waste Plan

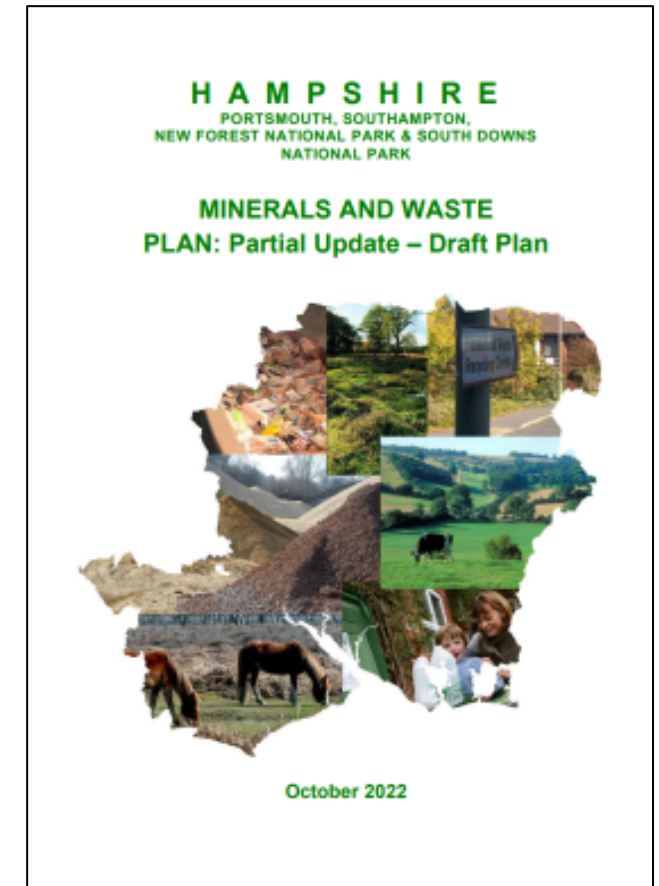
## Partial Update Consultation

Environment and Sustainability Overview and Scrutiny Panel  
January 2023

# Partial Update Consultation

- Consultation period: November 2022 – 31 January 2023
- Jointly produced by Hampshire County Council, the two City Councils, and the two National Parks.
- Review in 2020 concluded that only parts of the plan need updating.
- Therefore it is Partial Update
- NFDC is a consultee

92



# The Minerals & Waste (M&W) Plan

## Purpose & Scope

- Enable enough minerals for Hampshire's needs
- Deal with waste effectively (inc using waste as a renewable energy source)
- Covers the period upto 2040

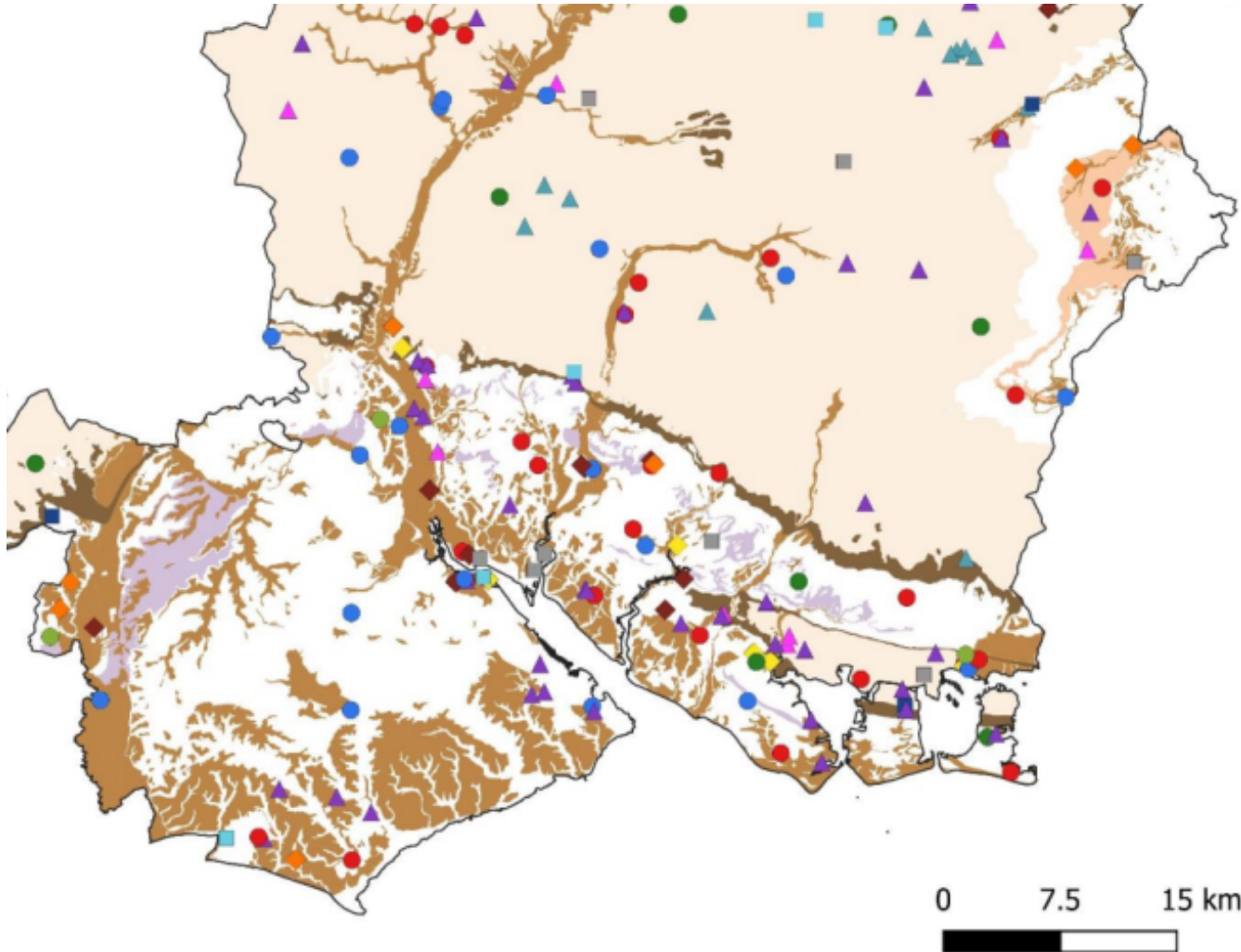
93

## Main tasks

- Identify sites for aggregate extraction and waste processing
- Mitigate any adverse effects from those sites
- Policies for each mineral type / waste stream
- Safeguard required M&W infrastructure

# The New Forest context

94



- The New Forest contains extensive minerals deposits
- Existing mineral allocations remain safeguarded
- New proposed allocations: Partial Review details new sites and the related issues.

# M&W Policy content

## The Draft Plan includes new policies for:

- Requiring biodiversity net gain from all developments
- Greater focus on planning for climate change
- Stronger application of the waste hierarchy
- Updating site allocations (and related policies) to enable a steady and adequate supply of aggregates.

# Proposed Allocations



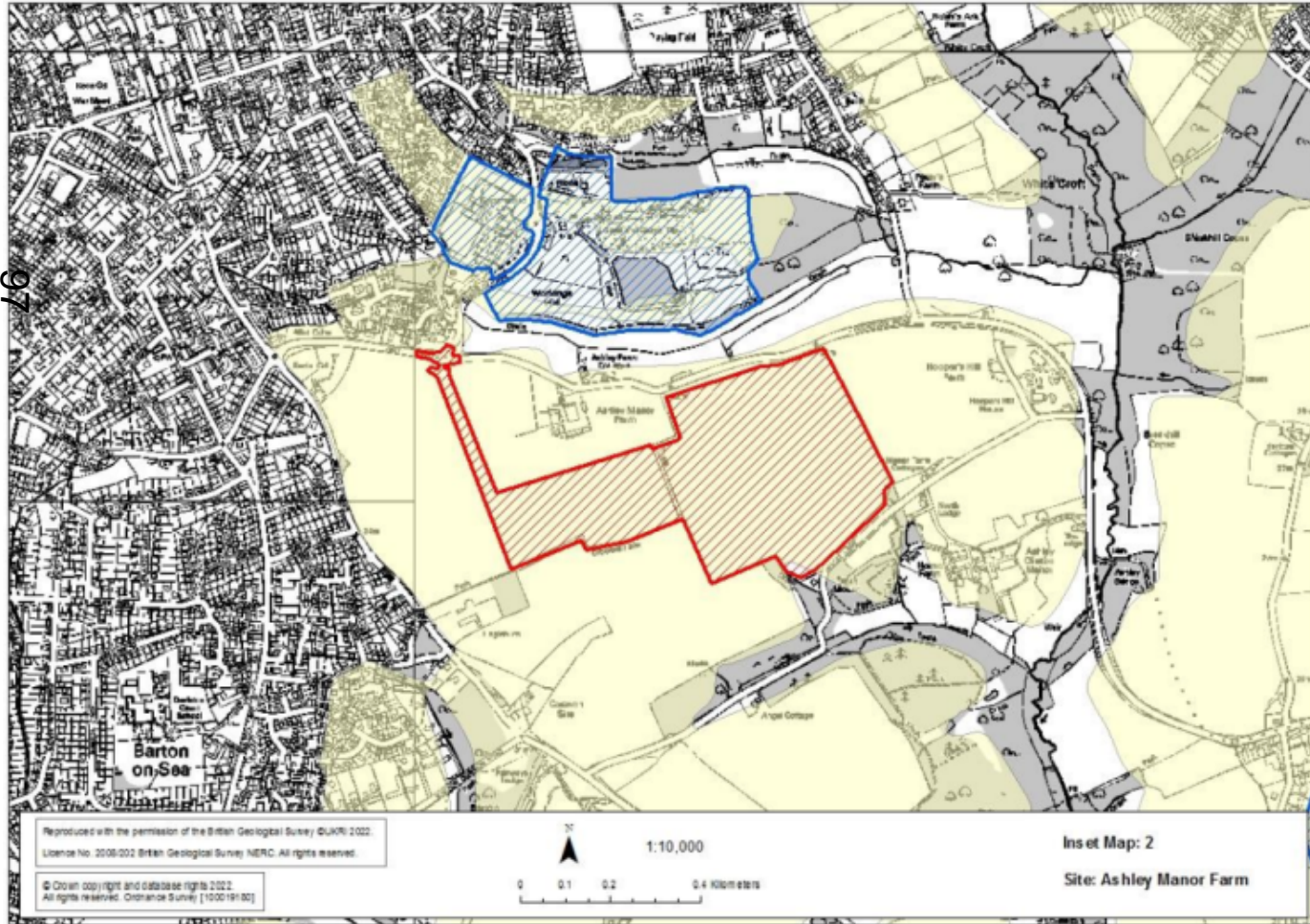
## Totton Sidings (Totton Station)

Proposed use: aggregate rail depot.  
Sand & gravel to north Hampshire.

Would move minerals that would otherwise be transported using roads.

Traffic: No details of existing and proposed traffic generation

# Proposed Allocations

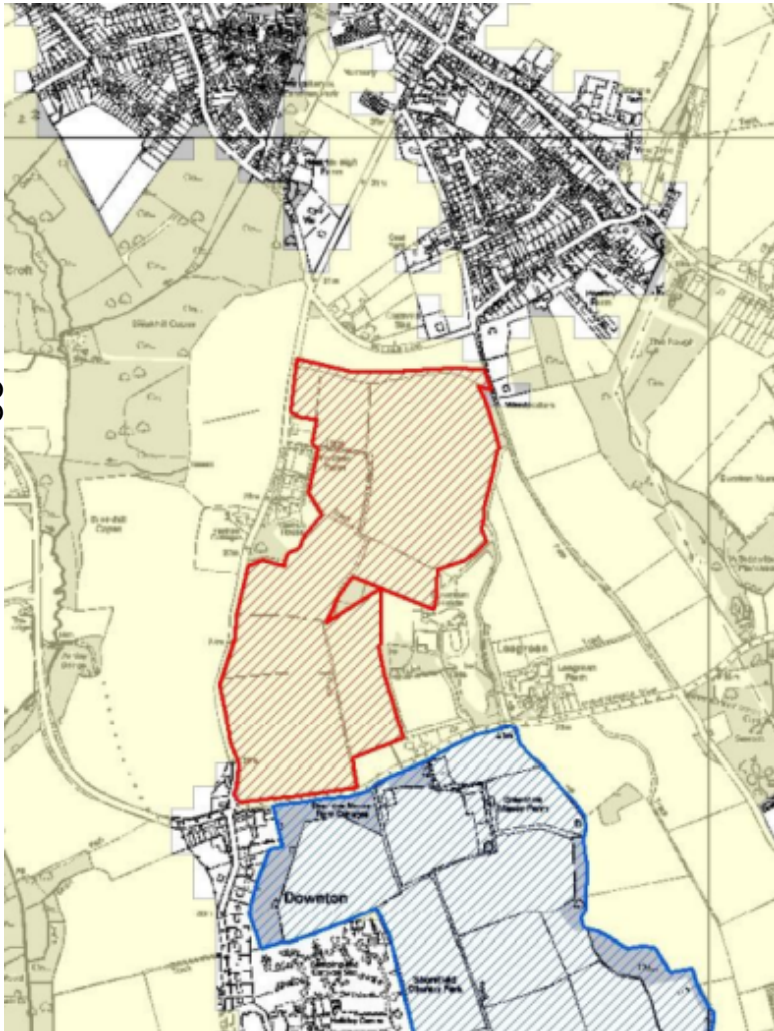


## Ashley Manor farm (New Milton)

- Proposed land use: Excavation of sharp sand and gravel (1.5mt)
- Restoration: to agriculture (species rich meadow, ditches/ponds, extra hedgerows, utilising inert material)
- Traffic: est. 50 HGVs per day
- Likely commencement 2024/25+

# Proposed Allocations

86

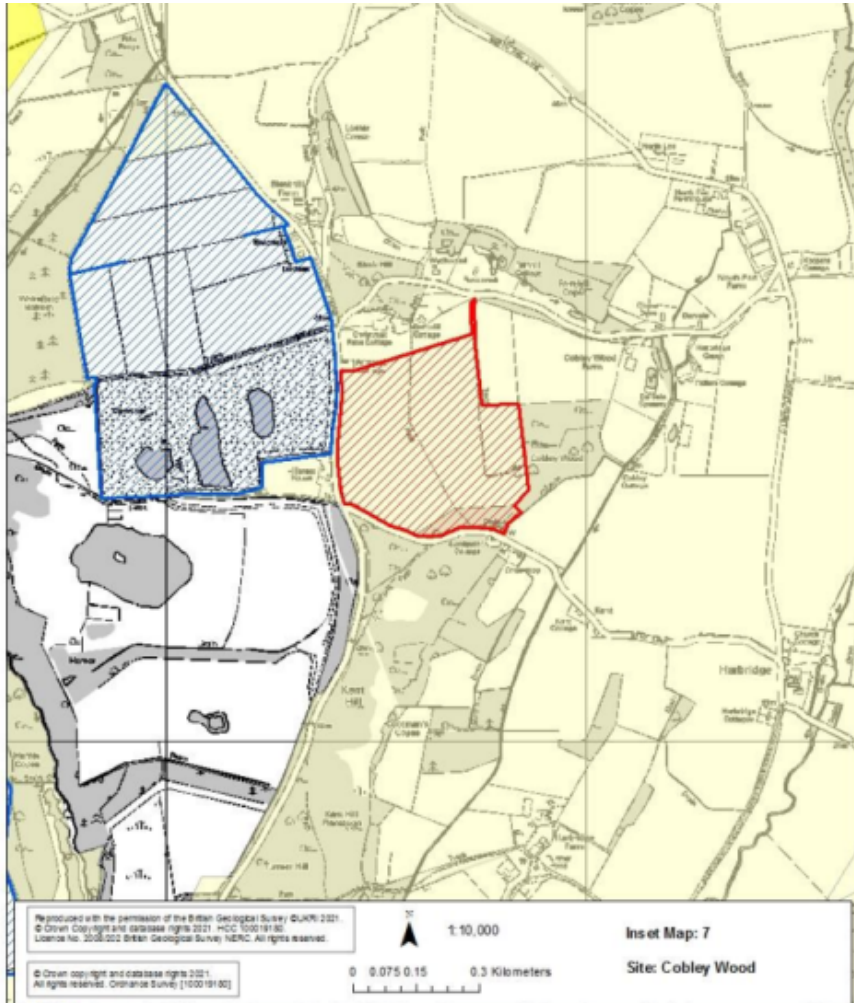


## Yeatton Farm (Hordle)

- Proposed use: Extraction of sharp sand & gravel (1.1 mt)
- Restoration: to a mixture of lakes, wetland, woodland and agriculture.
- Traffic: est. 50 HGVs per day
- Likely commencement 2039+

# Proposed Allocations

66

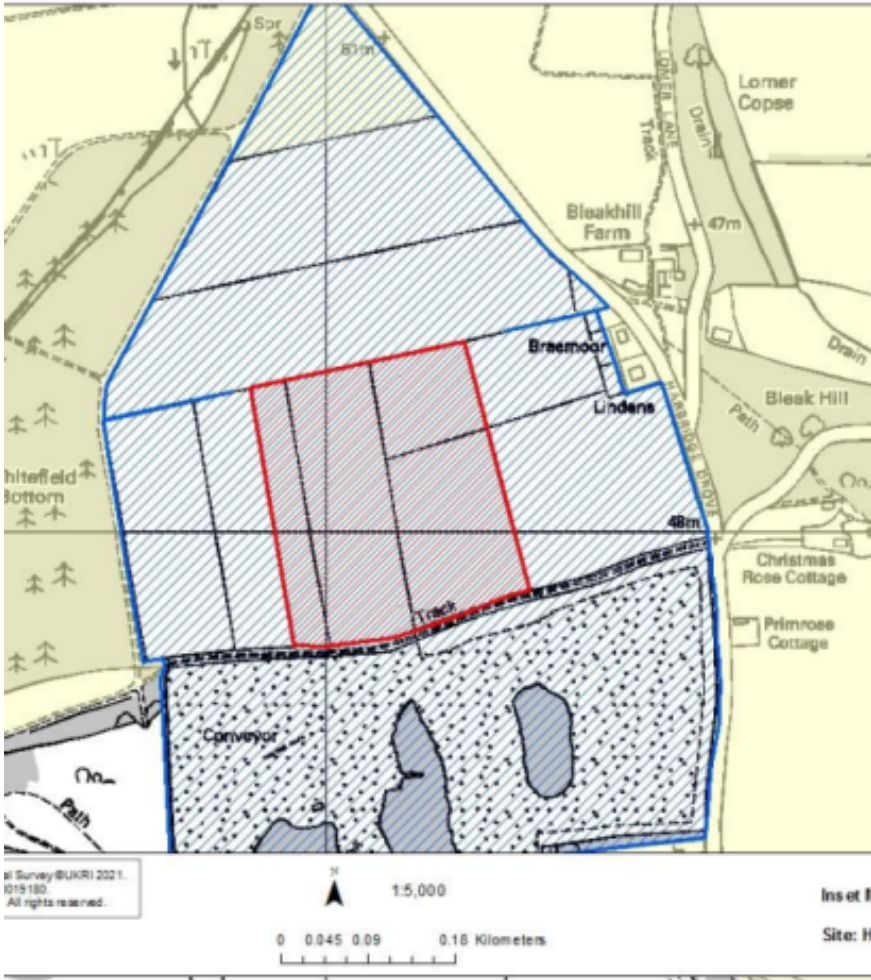


## Cobley Wood (Harbridge, Alderholt)

- Proposed land use: Extraction of sharp sand and gravel (1 mt)
- Restoration: to agricultural grazing land with increased nature conservation and biodiversity. Woodland and permissive access could also be included.
- Traffic: est. 55 HGVs per day
- Likely commencement 2036+

# Proposed Allocations

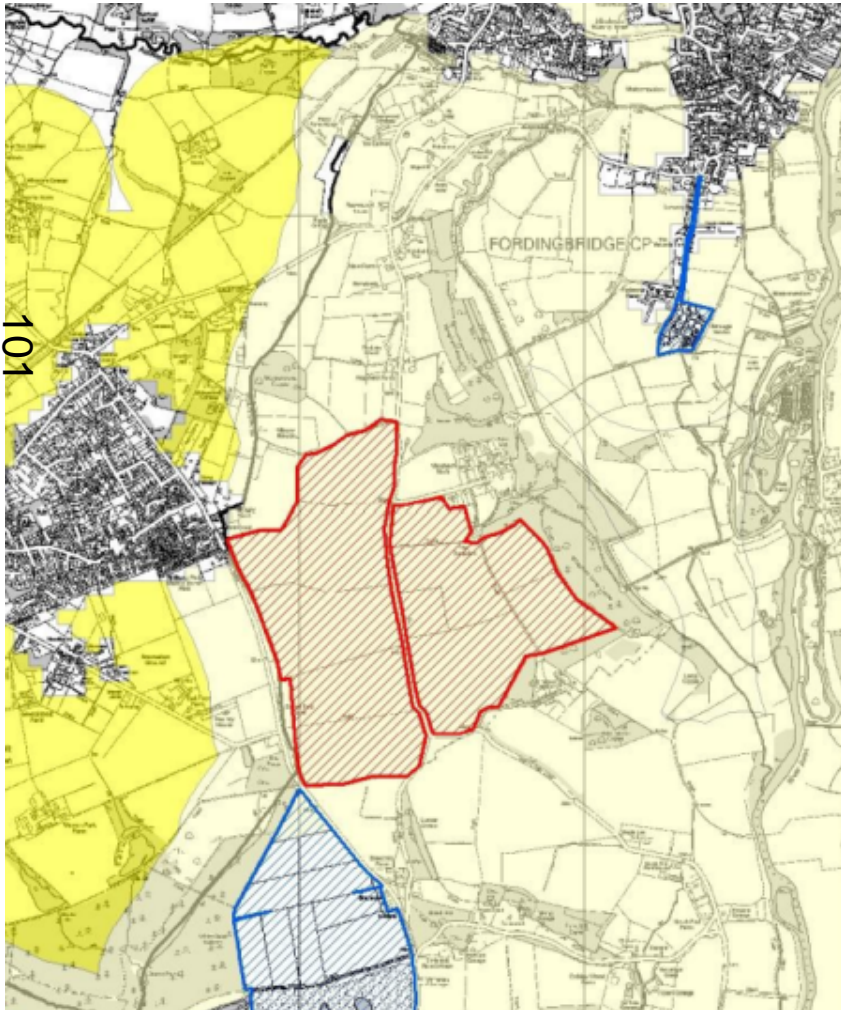
100



## Hamer Warren Quarry (Harbridge, Alderholt)

- Proposal: Hazardous waste (asbestos) landfill.
- Restoration: Delivery of existing restoration scheme approved under planning permission 19/11325
- Traffic: est. 20 HGVs per day
- Likely commencement 2024/25+

# Proposed Allocations

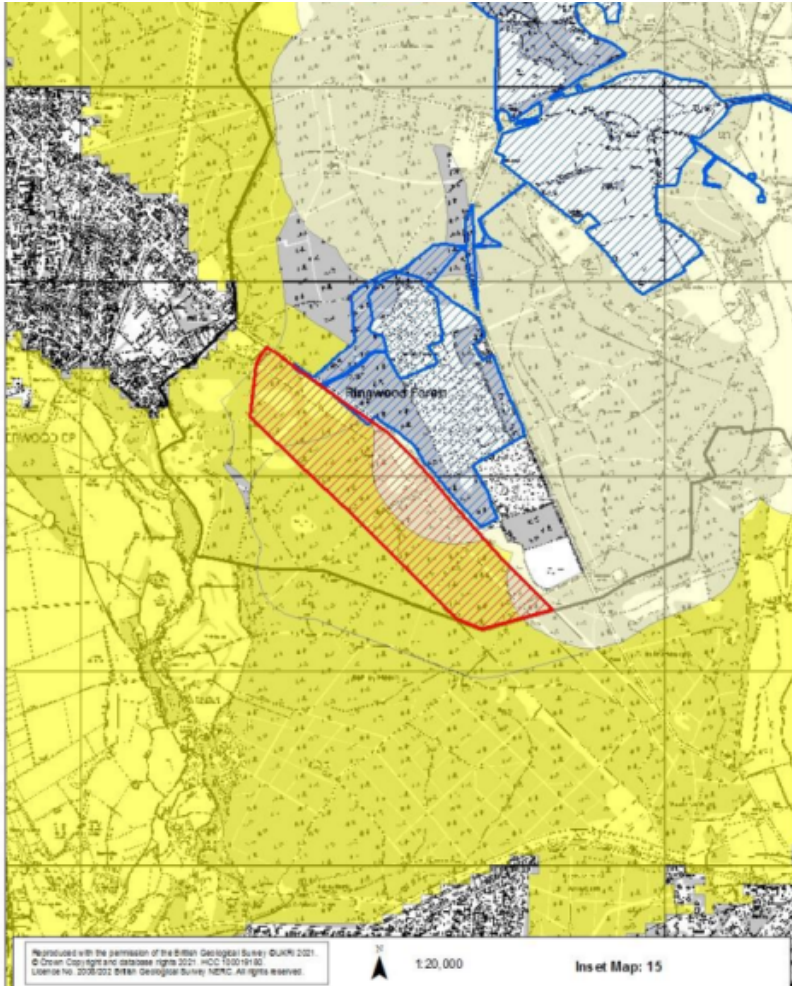


## Midgham Farm Location: Hillbury Road, Alderholt

- Proposed land use: Extraction of sharp sand and gravel (4.2 mt)
- Restoration: to agriculture at the existing levels using imported inert materials, including nature conservation and increased permissive access.
- Traffic: est. 55 HGVs per day
- Likely commencement 2024/25+

# Proposed Allocations

102



## Purple Haze Location (south east of Verwood)

- Proposed land use: Extraction of soft sand, sharp sand and gravel (around 3 mt)
- Restoration: Inert landfill. Will eventually be returned to combination of deciduous woodland planting, heathland, nature conservation areas, and enhanced recreational areas.
- Traffic: est. 45 HGVs per day
- Likely commencement 2024/25+

# Next steps

- Deadline for response - 31<sup>st</sup> January 2023
- NFDC response will be a Portfolio Holder decision
- Further round of consultation in mid 2023
- HCC aim to proceed to public examination in late 2024.

This page is intentionally left blank